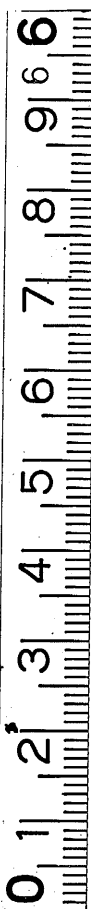


50-26



2169

n

INSTRUCTIONS

To be Observed by the several

SURVEYORS

Appointed for the better ascertaining the

Duties upon HOUSES,
WINDOWS, or LIGHTS,

Purfuant to the several

ACTS of PARLIAMENT
in that Behalf.



LONDON:

Printed in the Year 1757.

10

INSTRUCTIONS

To be Observed

By the several SURVEYORS appointed for the better ascertaining the DUTIES upon Houses, Windows, or Lights, pursuant to the several ACTS of Parliament in that Behalf.

I. **Y**OU are required forthwith to take the Oath of Office (hereafter mentioned) before one of His Majesty's Justices of the Peace, and return a Certificate thereof to the Commissioners for the Affairs of Taxes, at their Office near the Exchequer, *Westminster*, under whose Direction you are, and from whom you will occasionally receive further Instructions.

II. You are to take the *Sacrament* in some *Parish Church*, and obtain a Certificate thereof, signed by the Minister and
A 2 Church-

(4)

Church-Warden, in the Presence of two credible Persons, which you are to carry to the next Quarter-Sessions in the County where you are concern'd, or if in *London*, to one of the Courts in *Westminster-Hall*, and there take the Oaths to the Government, Test, and Abjuration-Oath, which you must do within the Space of Three Months, or you will subject yourself to the Penalty of Five hundred Pounds, and be render'd incapable of your Employment.

The Oath of Office.

I A. B. do Swear, That I will truly and faithfully execute the Trust reposed in me, pursuant to the several Acts of Parliament for laying certain Rates and Duties upon Houses, Windows, or Lights; and that I will not receive any Fee, Gratuity, or Reward from any Person or Persons whatsoever, in respect of my Office of Surveyor, other than from His Majesty, or those appointed by His Majesty.

So help me G O D.

III. You are required forthwith to attend the Commissioners for the Affairs of Taxes at their

(5)

their Office aforesaid, before you enter upon your Duty, provided the District you are placed in, does not exceed one hundred Miles Distance from *London*; but in Case your Place of Residence should be more remote, you are directed to repair to the General Surveyor, under whose Inspection your Division lies, or to the Receiver-General of the Taxes for the County, and take his Directions how to proceed on your Survey, as also the proper Place for your Residence, which must be in some Market-Town, as near the Center of your Division as may be, of which you are to inform the Board, for their Approbation, and that they may know where to direct to you, and you must not alter the same without their Leave; and you are to apply yourself with all Diligence in surveying every Dwelling-House throughout your Division, according to the Rules given in these Instructions, so that no Neglect may be imputed to you.

IV. You are carefully to read the Acts of Parliament under-mentioned (which are herewith sent you) viz. *An Act made in the 20th Year of His present Majesty's Reign, for Repealing the several Rates and Duties upon Houses,*

(6)

Houses, Windows and Lights, and for granting to His Majesty other Rates and Duties upon Houses, Windows, or Lights; and for raising the Sum of Four Million four hundred thousand Pounds by Annuities, to be charged on the said Rates or Duties. And one other Act passed the same Session, to enforce the Execution of the said Act, *For granting to His Majesty several Rates and Duties upon Houses, Windows, or Lights.* Also another Act passed in the 21st Year of His Majesty's Reign, *For explaining, amending, and further enforcing the Execution of the said Act;* to the End that you may fully inform yourself of the several Duties for which you are appointed Surveyor, how the same ought to be rated, charged and paid, Omissions rectified, and His Majesty not defrauded of any Part of the said Duties.

V. You are to observe by the first recited Act, that there shall be charged, levied and paid, the several Rates and Duties hereafter mentioned, *that is to say,*

For and upon every *Dwelling-House* inhabited, which now is, or hereafter shall be erected within that Part of *Great-Britain* called *England*, the yearly Sum of *Two Shillings.*
And

(7)

And for every Window or Light in every *Dwelling-House* within and throughout the whole Kingdom of *Great-Britain*, which shall contain Ten, Eleven, Twelve, Thirteen, or Fourteen Windows or Lights, the yearly Sum of *Sixpence* for every Window or Light in such House.

And for every Window or Light in every *Dwelling-House* as aforesaid, which shall contain Fifteen, Sixteen, Seventeen, Eighteen, or Nineteen Windows or Lights, the yearly Sum of *Nine Pence* for each Window or Light in such House.

And for every Window or Light in every such *Dwelling-House* as aforesaid, which shall contain Twenty Windows or Lights and upwards, the yearly Sum of *One Shilling* for each Window or Light in such House as aforesaid.

Which several and respective yearly Sums before charged upon every Window or Light, contained in every *Dwelling-House* in *England*, as aforesaid, are to be paid over and above the said Duty of *Two Shillings* upon Houses before-mentioned.

And you are to take Notice by the last Act *For explaining, amending, and further enforcing the former Act,* That every Kitchen, Scullery,

Scullery, Buttery, Pantry, Larder, Washhouse, Landry, Bake-house, Brew-house, and Lodging-Room, belonging to or occupied with any *Dwelling-House*, whether the same shall or shall not be within or contiguous to, or disjoined from the Body of such *Dwelling-House*, shall be deemed and taken to be Part of such *Dwelling-House*; and all Windows or Lights therein shall be accordingly charged with the Rates and Duties granted by the said Act.

Also, that Sky-Lights, Windows or Lights in Stair-Cases, Garrets, Cellars, Passages, and other Parts of *Dwelling-Houses*, to what Use or Purpose soever applied, were, are, and shall be deemed to be chargeable with the said Duties.

VI. You are further to observe by the former Act, that all Outside Windows in Frames, which are or shall be extended so far as to give Light into more Rooms than one, such Window shall be reckoned and charged as so many separate Windows as there are Rooms enlightened thereby: And that where two or more Windows or Lights are fixed in *one Frame*, and a *Partition* or Division between such Windows or Lights is or shall be of the Breadth

Breadth or Space of *Twelve Inches*, the Window or Light on each Side of such *Partition* or Division shall be deemed as a *distinct* Window or Light, and be rated accordingly; you are therefore to provide yourself with a *Foot Rule* or Measure for that Purpose.

VII. You are likewise to observe, that where any *Dwelling-House* is or shall be Lett in different Apartments, to several Persons, and the Landlord of such House pays other Taxes and Parish Rates, for the same, such Landlord shall be deemed and taken to be the Occupier of such *Dwelling-House*, and be charged with and liable to pay the Rates and Duties for the same as one entire House.

VIII. You are also to observe, that where any House shall be inhabited by two or more Person or Persons, or Family or Families, such House shall nevertheless be subject to, and shall in like Manner pay the Rates and Duties charged by the said Act, as if such House was inhabited by one Person or Family only.

IX. You are further to observe, that every House, whereof the Keeping only is committed

(10)

ted or left to the Care or Charge of any Person or Servant, who doth not pay to the Church and Poor, shall be subject to the like Rates and Duties for the Windows or Lights therein, as if it were inhabited by the Occupier, or by a Tenant, and to be paid by the respective Occupiers or Tenants of the same.

X. You are further to observe, that such *Dwelling-Houses Only*, where the *Occupier* or *Occupiers* thereof, by reason of his, her, or their *Poverty Only*, is or are exempted from the usual Taxes, Payments and Contributions towards the *Church and Poor*, shall be construed or understood to be excepted out of the said Act, or discharged from the Rates and Duties thereby granted: And that *Only* in such Cases where the *Dwelling-Houses* so occupied are *Cottages not containing above Nine Windows or Lights in the whole*. And you are diligently to take Care that no Persons whatever are exempted, but such only as fall within the Description abovementioned. And where you have Reason to think there is any Favour or Indulgence shewn to any Occupiers of Houses, who, though able, yet do not pay, you are directed not only to levy the Duty on such Persons by Surcharge, but also

(11)

also to send up a State of the Case to the Board, that the same may be taken into Consideration.

XI. You are further to observe, that if any Occupier of any Dwelling-House shall open any Windows or Lights (which have been stopped up in order to evade the Payment of these Duties) after the Assessments for the Year are settled, and the Warrants for collecting the said Rates and Duties are signed by the Commissioners, without first giving or causing to be given Notice thereof in Writing to the proper Surveyor, every such Occupier of such Dwelling-House is to forfeit the Sum of *Twenty Shillings* for each respective Window or Light opened as aforesaid, one Moiety whereof, by the last mentioned Act, is to be paid to the Person who shall give Notice or Information of the opening such Window or Light, and the other Moiety (together with all other Fines, Penalties and Forfeitures) to be paid to the Collectors of the Parish or Place where the same shall be levied, and be added to the respective Assessments and Duplicates for such Parish or Place. And by another Clause in the said Act, No Window or Light shall be deemed to be stopped up, unless

unless such Window or Light shall be stopped up effectually with Stone or Brick, or Plaster upon Lath, or upon any other Material commonly used to plaster upon, or with the same Kind of Materials whereof the Outside of such Dwelling-House doth chiefly consist; *with this Proviso*, That the Act shall not extend to any Windows which were *really* and *bona fide* stopped up with any Materials whatsoever before the making of the first-mentioned Act.

XII. You are to observe by the first Act, that the Assessments for every Hundred, Parish and Place are to be made, and Copies thereof signed by the Commissioners, and to be delivered to the Collectors before the first Quarterly Payment becomes due, *viz. Midsummer* yearly. And that by the last mentioned Act, from and after the 25th Day of *March* 1748, no Assessments which shall be made or delivered to the said Commissioners, shall be altered or diminished before the Time therein appointed for the hearing and determining of Appeals, and then only upon the said Commissioners hearing the Matter of the Appeal particularly relating thereto or concerning the same upon a General Appeal Day.

Day. And you are by the said Act, twice in every Year, to wit, on or before the 10th Day of *August*, and the 10th Day of *January* yearly, to certify in Writing under your Hand, by way of Surcharge, to any three or more of the Commissioners, what Dwelling-Houses, Windows or Lights have been omitted to be charged with the said Rates and Duties in the Assessments made of the same for the then current Year, and that thereupon, and upon Oath being first made that Notice was left in Writing, at the Dwelling-Houses of the several Occupiers so charged or surcharged by virtue of such Certificate, that you intended to charge them in such Manner, and for such Number of Windows or Lights as they shall be charged for by virtue of such Certificate, the said Commissioners are to cause such Assessments to be rectified according to such Certificate, and delivered to the Collectors; and the said Rates and Duties to be levied accordingly.

XIII. You are also to observe, that the Clauses in the former Act, by which the Appeals were appointed to be heard Quarterly, *viz.* within thirty Days from the respective Quarterly Days, and the Determination

(14)

tion of the Commissioners thereupon should be final, are now repealed; and it is since enacted, That all such Appeals as shall be made to the said Commissioners between the 25th Day of *March* and the 20th Day of *August* yearly, shall be heard and determined by the said Commissioners, upon such Days as shall by them be appointed for the hearing of such Appeals, between the 20th Day of *August* and the 15th Day of *September* following; and that all such other Appeals as shall be made to the said Commissioners between the 29th Day of *September*, and the 20th Day of *January* following yearly, shall in like Manner be heard and determined by the said Commissioners upon such other Days as shall be appointed by them for the Hearing thereof, between the 20th Day of *January*, and the 10th Day of *February* following yearly. And it is further enacted, That the said Commissioners shall not, upon hearing of any Appeal, make any Abatement in the Charge or Surcharge made upon any Person by the Assessment, or the Surcharge of the Surveyor, but the same shall stand good and remain Part of the annual Assessment, unless it shall then appear to the said Commissioners, by Examination upon Oath, that such Person

(15)

Person is over-rated in and by the said Assessment, or the said Surcharge; and every Person intending to appeal to the said Commissioners, is required to give at least ten Days Notice thereof in Writing to the Surveyor, or to one or more of the Assessors of the Parish wherein such Person is rated, of such Intention to appeal. And you have full Liberty by the said Act, unless you misbehave, to be present during all the Time of Hearing such respective Appeal by the Commissioners, in order to justify your Charge; you are therefore to take Care duly to attend the same, to demean yourself respectfully to the acting Commissioners, and to all others with whom you may be concerned, *to have the Oath tender'd to every Appellant, and to remind the Commissioners to swear the Assessors, as the Act expressly directs.*

XIV. You are further to observe, that if either the Surveyor, or the Person appealing, shall apprehend the Determination made by the said Commissioners to be contrary to the true Intent and Meaning of either of the said Acts of Parliament, and shall then declare himself dissatisfied with such Determination, it shall and may be lawful to and for such Surveyor or Person respectively, to require the said

(16)

said Commissioners to state specially, and sign the Case upon which the Question arose, together with their Determination ; which Case, when so stated and signed by the said Commissioners, you are to transmit to this Board, in order to have the Opinion of one of the Judges thereupon, as the Act directs, according to which Opinion so certified, the Assessment, which was the Cause of such Appeal, is to be altered or confirmed, and the same, together with the Case, will be returned to you for that Purpose.

XV. At your first Survey of any Dwelling-House, you are to shew your Commission, if required ; and if any Person or Persons shall refuse you the Liberty to pass through their House or Houses, in order externally to view and number the Windows or Lights, that cannot be conveniently seen or numbered without passing through such House or Houses, you are in such Case civilly to acquaint them with the Danger of the Law ; and to prevent any Dispute or Opposition, the Constable, Headborough, Tything-man, or other Officer of every Parish or Place, are required by the Act to be aiding and assisting to you in the Execution of your Office.

You

(17)

You are also to take particular Notice of all Houses uninhabited within your Division, and enter the same in your Survey-Book, to the End that such House or Houses, when inhabited, may be brought into Charge, and certified in the Assessment.

XVI. As soon as you have finished your Survey of any Parish or Place, you are carefully to examine and compare the same with the Assessments made by the Parochial Assessors ; and if you shall find or discover that any Dwelling-Houses, Windows or Lights, which should and ought to be charged with the said Rates and Duties, have been omitted to be charged therewith, or are under-rated, you are to certify the same in Writing under your Hand, by Way of Surcharge, as directed in the 12th Article of these Instructions ; and you are to write under such Assessments, *Examined such a Day by A. B. Surveyor*, that the Times when such Place or Places were surveyed may appear to the General Surveyor, who shall be authorized to inspect your Proceedings, and whose Directions you are from Time to Time diligently to observe.

B

XVII.

(18)

XVII. You are required to enter fairly in your Books the Surveys by you made, the Names of the Parish, Village, Town or Place, the Names and Surnames of the Inhabitants or Occupiers of every Dwelling-House, the Number of Windows or Lights, and the Duties payable for the same set against their respective Names in distinct Columns; and you are to cast up every Column and Page in such Book or Books, and at the End thereof draw forward the Amount of each Column and Page, and then cast the same into one total Sum, and insert in Words at length the Sum or Sums of Money that such Total shall amount to. And you are to return your Survey-Books for the Year to the Board so soon as the same are finished, and your new Books are made and transcribed for the ensuing Year, which must always be done before *Midsummer*, for which Purpose Printed Paper for such Survey-Books will be annually sent to you from this Office.

XVIII. You are also to hasten the Collectors to make Payment of the Money to the Receiver-General, and to get the Duplicates

(19)

cates settled and signed by the Commissioners so soon as the Year is ended, that such Duplicates (which must be for the same Hundreds and Places as are annually made out for the Land-Tax) may be delivered to the Receiver-General, and also transmitted to the Office of the King's Remembrancer in the *Temple, London*, within three Months at farthest after *Lady-Day* yearly, as the Act directs: By which Time your Survey-Books for every Hundred, Parish and Place within your Division must be completed, and an Abstract made at the End of such Book or Books, containing the gross Sum charged upon each Hundred, &c. the Surcharges by you made, the Sums discharged by the Commissioners upon Appeals, and the Net Charge settled and allowed by them: And when the same hath been examined, compared, and signed by a General Surveyor, you are from thence to draw out upon a Sheet of Paper, a fair Account of the *Net Produce* of these Duties in every Hundred for the whole Year past, according to the form printed at the End of these Instructions, (*which Account must always agree with the Duplicates*) and send it up to the Board.

B 2

XIX.

(20)

XIX. You are further strictly charged to enter in the Margin of your Survey-Book the Days of the Month when you surveyed each Parish, and to take Care that the Houses of the Assessors and Collectors of each Parish, are brought into Charge with the rest; and, on settling the Accounts with the Collectors, if you find any Fraud committed, or intended to be committed, by them in secreting Part of the Revenue, you are without Delay to acquaint the Board therewith, who will direct their Solicitor to prosecute such Collectors.

XX. You are likewise required to send to this Office an Account of your Proceedings, at the End of every Quarter, by way of *Diary*, and when any Thing extraordinary happens, you must give the Board an Account thereof by Letter, and proceed according to their Directions: And that you may be the better able to perform your Duty, you are required to keep a good Horse; to live within your Division, and not to follow any other Employment without Leave of the Board.

You will on no Account whatever fail to return annually at the End of your Survey-
Book

(21)

Book (which for the future will have a blank printed Scheme for the Purpose annexed to it) the Total Number of Houses, inhabited and uninhabited, with their Number of Windows, together with the Cottages within your Division.

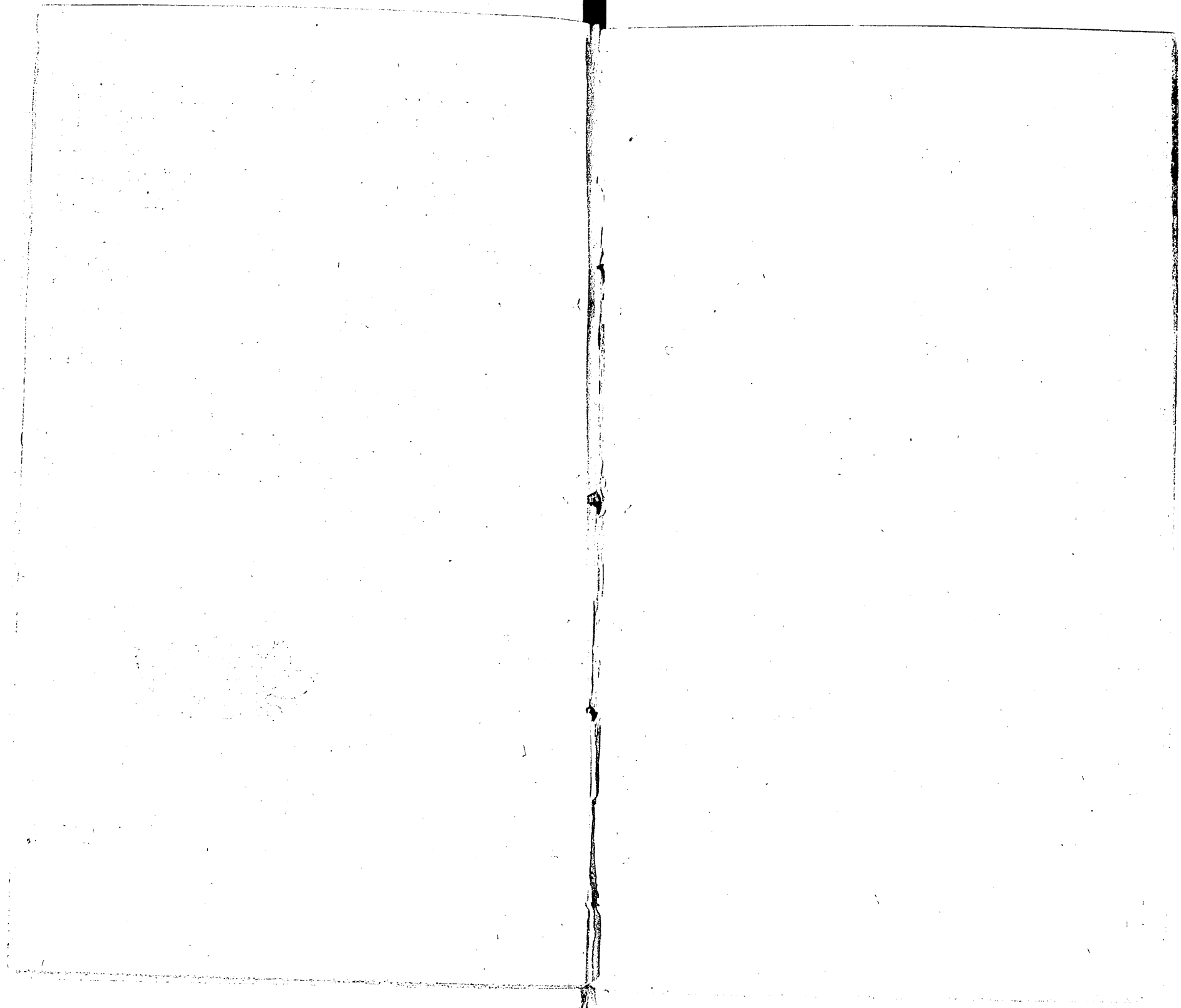
And for your better Information, a Scheme (*vide* Tab. III.) is here added, with the Blanks filled up, similar to that which will be found in your Survey-Paper, and which will lead you to a perfect Knowledge of what is expected, without the least Possibility of a Mistake.

These *Orders* and *Instructions* you are punctually to observe, on Pain of being discharged.



Tab. I.

0180



Tab. I.

The Form of Book-Keeping.

Middlesex County,
First Division.

A Survey of the Duties on Houses and Windows from the 25th
1756, to the 25th of March 1757. By A. B. Surveyor.

| Times when Surveyed. | Edmonton Hundred, Enfield Parish, | Assessors Charge. | | | Surveyors Charge. | | | Discharged on Appeals. | | | Occasional Remarks. | | | |
|--------------------------------|-----------------------------------|-------------------|-------------------------------|----|-------------------|----------------|---------------------|------------------------|----------|----------------|---------------------|----|----------------------------------------------------------------------------------|----------------------------------------------------------------------------------|
| | Inhabitants Names. | Windows. | Duties on Houses and Windows. | | | Windows. | Increase on Survey. | | Windows. | Money. | | | | |
| | | N ^o | £ | s | d. | N ^o | £ | s | d. | N ^o | £ | s | d. | |
| 1757. May 1 st . | Samuel Garth | — | — | — | — | — | — | — | — | — | — | — | — | Excused for Poverty on Stop'd up one Light. |
| | George Lane | 10 | — | 7 | — | — | — | — | — | 9 | — | 5 | — | |
| | Joseph Simpson | 11 | — | 7 | 6 | — | — | — | — | — | — | — | — | } Fined 20s. for opening } ter stop'd up, without g |
| | John Rogers | 12 | — | 8 | — | — | — | — | — | — | — | — | — | |
| | 2 | Richard Parsons | 13 | — | 8 | 6 | — | — | — | — | — | — | — | } Fined 20s. for opening } ter stop'd up, without g |
| | John James | 14 | — | 9 | — | 15 | — | 4 | 3 | — | — | — | — | |
| | John Peterson | 15 | — | 13 | 3 | — | — | — | — | — | — | — | — | } Empty the 4th Quarter |
| | Richard Parr | 16 | — | 14 | 0 | — | — | — | — | — | — | 3 | 6 | |
| | Thomas Proctor | 17 | — | 14 | 9 | — | — | — | — | — | — | — | — | } Charged on the Landlo |
| | John Armstrong | 18 | — | 15 | 6 | — | — | — | — | — | — | — | — | |
| | 4 | Henry Simms | 19 | — | 16 | 3 | 20 | — | 5 | 9 | — | — | — | } Empty the 1st and 2d Q } Inhabited the 3d and 4t } Empty the whole Year. |
| | John Strong | 20 | 1 | 2 | — | — | — | — | — | — | — | — | — | |
| | F. Doe and other Inmates | 21 | 1 | 3 | — | — | — | — | — | — | — | — | — | } Empty the 1st and 2d Q } Inhabited the 3d and 4t } Empty the whole Year. |
| William Shaw | 29 | 1 | 11 | — | — | — | — | — | — | — | — | — | | |
| { Late Hugh Rose | 30 | — | — | — | — | — | — | — | — | — | — | — | } Empty the 1st and 2d Q } Inhabited the 3d and 4t } Empty the whole Year. | |
| { Now James Lowe | — | — | — | — | 30 | — | 16 | — | — | — | — | — | | |
| Late John Powel | 31 | — | — | — | — | — | — | — | — | — | — | — | } Empty the 1st and 2d Q } Inhabited the 3d and 4t } Empty the whole Year. | |
| Increased | — | — | 9 | 11 | 9 | — | 1 | 6 | — | — | — | 10 | | 6 |
| Gross Charge | — | — | 10 | 17 | 9 | — | — | — | — | — | — | — | — | } Affessors. } Collectors. |
| Discharged | — | — | — | 10 | 6 | — | — | — | — | — | — | — | — | |
| Net Charge | — | — | 10 | 7 | 3 | — | — | — | — | — | — | — | — | } Affessors. } Collectors. |
| By a Fine or Fines | — | — | 1 | — | — | — | — | — | — | — | — | — | — | |
| Total | — | — | 11 | 7 | 3 | — | — | — | — | — | — | — | — | |

John Rogers,
Richard Parsons, } Affessors.

Thomas Proctor,
John Armstrong, } Collectors.

Tab. I.

The Form of Book-Keeping.

| Times when Surveyed. | | Edmonton Hundred. Enfield Parish. | | Assessors Charge. | | | Surveyors Charge. | | | Discharged on Appeals. | | | Occasional Remarks. | | |
|----------------------|--------------------|-----------------------------------|-----------------|-------------------|-------------------------------|----|-------------------|---------------------|----|------------------------|----------------|---|---------------------|----|--------------------------------------------------------------------------|
| | | Inhabitants Names. | | Windows. | Duties on Houses and Windows. | | Windows. | Increase on Survey. | | Windows. | Money. | | | | |
| | | | N ^o | £ | s | d. | N ^o | £ | s | d. | N ^o | £ | s | d. | |
| 1757. May 1st. | | Samuel Garth | — | — | — | 2 | — | — | — | — | — | — | 2 | — | Excused for Poverty only. Stop'd up one Light. |
| | | George Lane | — | 10 | — | 7 | — | — | — | — | — | 9 | — | 5 | |
| | | Joseph Simpson | — | 11 | — | 7 | 6 | — | — | — | — | — | — | — | |
| | | John Rogers | — | 12 | — | 8 | — | — | — | — | — | — | — | — | |
| | 2 | | Richard Parsons | — | 13 | — | 8 | 6 | — | — | — | — | — | — | } Fined 20s. for opening a Light after stop'd up, without giving Notice. |
| | | John James | — | 14 | — | 9 | — | 15 | — | 4 | 3 | — | — | — | |
| | | John Peterson | — | 15 | — | 13 | 3 | — | — | — | — | — | — | — | |
| | | Richard Parr | — | 16 | — | 14 | 0 | — | — | — | — | — | 3 | 6 | Empty the 4th Quarter. |
| | | Thomas Proctor | — | 17 | — | 14 | 9 | — | — | — | — | — | — | — | |
| | | John Armstrong | — | 18 | — | 15 | 6 | — | — | — | — | — | — | — | |
| | 4 | | Henry Simms | — | 19 | — | 16 | 3 | 20 | — | 5 | 9 | — | — | Charged on the Landlord. |
| | | John Strong | — | 20 | 1 | 2 | — | — | — | — | — | — | — | — | |
| | | J. Doe and other Inmates | — | 21 | 1 | 3 | — | — | — | — | — | — | — | — | Empty the 1st and 2d Quarters. Inhabited the 3d and 4th Quarters. |
| | | William Shaw | — | 29 | 1 | 11 | — | — | — | — | — | — | — | — | |
| | | { Late Hugh Rose | — | 30 | — | — | — | — | — | — | — | — | — | — | Empty the whole Year. |
| | { Now James Lowe | — | — | — | — | — | 30 | — | 16 | — | — | — | — | | |
| | Late John Powel | — | 31 | — | — | — | — | — | — | — | — | — | — | | |
| | Increased | — | — | 9 | 11 | 9 | — | 1 | 6 | — | — | — | 10 | 6 | |
| | Gross Charge | — | — | 10 | 17 | 9 | — | — | — | — | — | — | — | — | |
| | Discharged | — | — | — | — | 10 | 6 | — | — | — | — | — | — | — | |
| | Net Charge | — | — | 10 | 7 | 3 | — | — | — | — | — | — | — | — | |
| | By a Fine or Fines | — | — | 1 | — | — | — | — | — | — | — | — | — | — | |
| | Total | — | — | 11 | 7 | 3 | — | — | — | — | — | — | — | — | |

John Rogers, } Assessors.
Richard Parsons, }

Thomas Proctor, } Collectors.
John Armstrong, }

Middlesex County,
First Division.

A Survey of the Duties on Houfes and Windows from the 25th of *March*
1756, to the 25th of *March* 1757. By *A. B.* Surveyor.

| Times when Surveyed. | Edmonton Hundred. Enfield Parish. | Assessors Charge. | | | Surveyors Charge. | | | Discharged on Appeals. | | | Occasional Remarks. | | | |
|----------------------|-----------------------------------|-------------------|-------------------------------|----|-------------------|---------------------|----|------------------------|--------|----------------|---------------------|----|----|-------------------------------------------------------------------------------------------------|
| | Inhabitants Names. | Windows. | Duties on Houfes and Windows. | | Windows. | Increase on Survey. | | Windows. | Money. | | | | | |
| | | N ^o | £ | s. | d. | N ^o | £ | s. | d. | N ^o | £ | s. | d. | |
| 1757. May 1st. | Samuel Garth | — | — | 2 | — | — | — | — | — | — | — | — | — | Excused for Poverty only. Stop'd up one Light. |
| | George Lane | 10 | — | 7 | — | — | — | — | — | 9 | — | 5 | — | |
| | Joseph Simpson | 11 | — | 7 | 6 | — | — | — | — | — | — | — | — | } Fined 20s. for opening a Light after stop'd up, without giving Notice. |
| | John Rogers | 12 | — | 8 | — | — | — | — | — | — | — | — | — | |
| | 2 | Richard Parsons | 13 | — | 8 | 6 | — | — | — | — | — | — | — | } Empty the 4th Quarter. |
| | John James | 14 | — | 9 | — | 15 | — | 4 | 3 | — | — | — | — | |
| | John Peterson | 15 | — | 13 | 3 | — | — | — | — | — | — | — | — | } Charged on the Landlord. |
| | Richard Parr | 16 | — | 14 | 0 | — | — | — | — | — | — | 3 | 6 | |
| | Thomas Proctor | 17 | — | 14 | 9 | — | — | — | — | — | — | — | — | } Empty the 1st and 2d Quarters. Inhabited the 3d and 4th Quarters. Empty the whole Year. |
| | John Armstrong | 18 | — | 15 | 6 | — | — | — | — | — | — | — | — | |
| | 4 | Henry Simms | 19 | — | 16 | 3 | 20 | — | 5 | 9 | — | — | — | — |
| | John Strong | 20 | 1 | 2 | — | — | — | — | — | — | — | — | — | — |
| | F. Doe and other Inmates | 21 | 1 | 3 | — | — | — | — | — | — | — | — | — | — |
| | William Shaw | 29 | 1 | 11 | — | — | — | — | — | — | — | — | — | — |
| | { Late Hugh Rose | 30 | — | — | — | — | — | — | — | — | — | — | — | — |
| | { Now James Lowe | — | — | — | — | 30 | — | 16 | — | — | — | — | — | — |
| | Late John Powel | 31 | — | — | — | — | — | — | — | — | — | — | — | — |
| | Increased | — | 9 | 11 | 9 | — | 1 | 6 | — | — | 10 | 6 | — | |
| | Gross Charge | — | 10 | 17 | 9 | — | — | — | — | — | — | — | — | |
| | Discharged | — | — | 10 | 6 | — | — | — | — | — | — | — | — | |
| | Net Charge | — | 10 | 7 | 3 | — | — | — | — | — | — | — | — | |
| | By a Fine or Fines | — | 1 | — | — | — | — | — | — | — | — | — | — | |
| | Total | — | 11 | 7 | 3 | — | — | — | — | — | — | — | — | |

John Rogers,
Richard Parsons, } Assessors.

Thomas Proctor,
John Armstrong, } Collectors.

An Abstract of the foregoing Account.

| Duplicates. | Neat Money. | | |
|-------------------|-------------|----|----|
| | £. | s. | d. |
| Edmonton | 757 | 5 | 1 |
| Part of Offulston | 952 | 13 | 6 |
| Gore | 256 | 17 | — |
| Part of Elthorne | 346 | 13 | 6 |
| Total | 2313 | 9 | 1 |

The Total Amount is Two thousand three hundred and thirteen Pounds, nine Shillings and one Penny.

Examined the
1757, by me

Day of

A. B. Surveyor.

Tab. III. The Form of a General Abstract to each Surveyor's Book.

County of Gloucester, } Total Number of Houses of every
First Division } Denomination whatever in the
Survey of A. B.

HOUSES IN- } N^o Total.
HABITED. { At 2s. the House Duty only 926 }
 { At 6d. each Window ——— 642 } 2624
 { At 9d. each Window ——— 574 }
 { At 1s. each Window ——— 482 }

HOUSES } N^o
UNINHABITED. { At 2s. the House Duty only 347 }
 { At 6d. each Window ——— 283 } 759
 { At 9d. each Window ——— 87 }
 { At 1s. each Window ——— 42 }

COTTAGES { Charged, but discharged upon Appeal, ——— } 47

COTTAGES { That were never brought into Charge by Reason of Poverty, ——— } 1247

Total Number of Houses of every Denomination whatever, ——— } 4677

From my Place of
Residence at Gloucester
this 19th Day of July 1757.

This Account is settled from an actual survey
made in the Months of
175 by me
A. B.

0185

