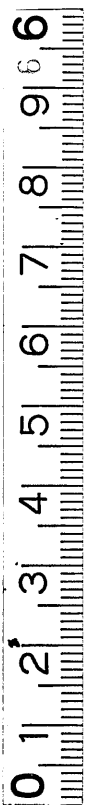


0385

50-15



Honour'd SIRs,

It is not for the Vanity of appearing in Print, that I give you this Second Trouble, but to give you the present State of the Mines.

In 1698. I wrote an Essay for the Information of the then Partners; wherein I promised to raise Ore at Eskirhir, at 14 s. 3 d. per Tun; and since I have raised some Thousands of Tuns at 3 s. 7 d. per Tun, including Washing and making Merchantable, which is a much less Price than what I then proposed: But finding that Eskirhir Ore did not bear that Quantity in Silver that other Mines in the Country did, which being not understood, lay unwrought; and the Nation being engaged in an expensive War, and wanting Bullion, we ventured upon the Working of these Mines, as not doubting but they will turn to a National Advantage, as well as a considerable Profit to our selves; and you will find by the following Maps, that I have managed Eleven Levels, or Addits, besides those in Eskirhir, which have all been as a dead Charge upon us for some Years, but now the most of them will yield us good Profit. These Things being consider'd, with the Charge of your Smelting Furnaces, Refining Furnaces, and Red-Lead Mills, I hope it will be no strange Thing to you, why we have not yet made a Dividend of more than 6l. per Cent. per Ann. I am,

Honour'd SIRs,

Your most Obedient Servant,

W. WALLER.

A Description of the Lead and Silver Mines of Bwlch yr eskir-hir.

A THE West Level, and Line of Level.
B The Shaft at the great Work, where the Vein is Eleven Foot wide, but that in Ore never exceeded Seven Foot Six Inches.

C We are there sinking; but being much water'd, we are driving up the East Level Vein from (d) in Ore, that is above Four Foot wide; and in some Places it is above Eight Foot wide in firm solid Ore: This Drift is to free the Shaft at C from Water.--- At D we want above Fifty Yards to cross to the Vein A; and at B we want but Five Yards; those Two Veins divide at the Mountain E; and the great Vein runs by F.

G The East Level Vein is very rich, as you find it described at D: We raise and wash Ore there, and make it Merchandizable at 3 s. 7 d. per Tun.

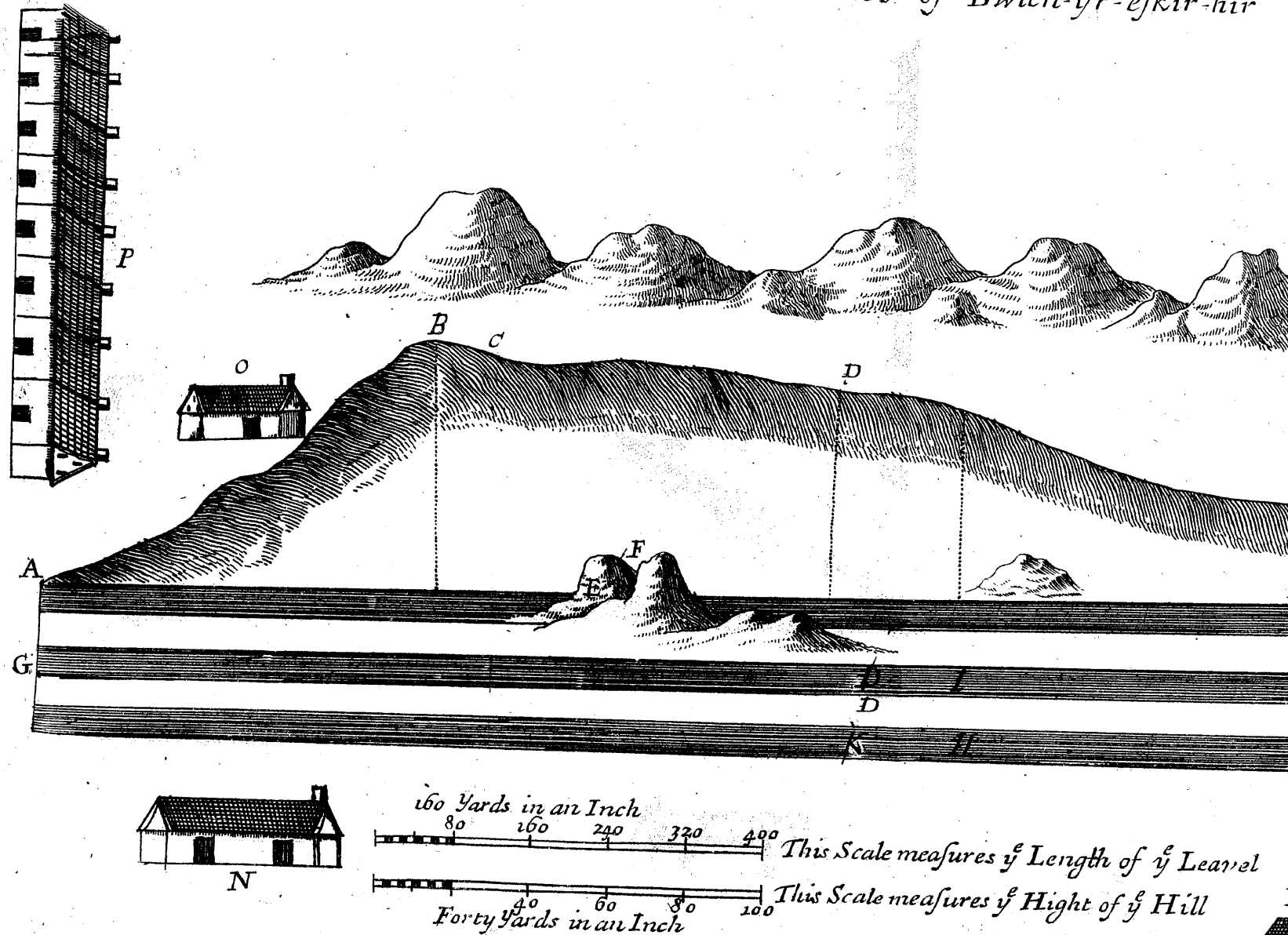
H Is the Bog-Work, where we have Ore a Yard wide, and a Drift from I will free it from Water. **K** The New Work is much wider, but the same Vein.

We have Three more Veins; but I have described none but where we have wrought, having much more in this Liberty, that will hereafter require a farther Description; this Boundary being above Thirty Seven Miles Compass: In which Liberty we have those Mountains included, on which the *Welsh* Prophecy is made, viz. *In Eskir-hir a Brin Melin* --- *Y Mae Cyfoeth trî Brenin*. Thus English'd; *In Eskirhir and Brin Melin* --- *Lies the Wealth of Three Kings*.

We shall set the other Part of this Liberty to work after the Mines that are here inserted in the following Maps are in full Management.

L Is the East Level; **M** Houses built for the Miners; **N** Two Store-houses; **O** the Smiths Forge; and **P** is the New Town, called, *Welsh Petozi*.

A Mapp of the Great Lead & Silver Mines of Bwlch-yr-eskir-hir



A Description of the Lead and Silver Mines of Bwlch yr eskir-hir.

A THE West Level, and Line of Level.

B The Shaft at the great Work, where the Vein is Eleven Foot wide, but that in Ore never exceeded Seven Foot Six Inches.

C We are there sinking; but being much water'd, we are driving up the East Level Vein from (d) in Ore, that is above Four Foot wide; and in some Places it is above Eight Foot wide in firm solid Ore: This Drift is to free the Shaft at C from Water.--- At D we want above Fifty Yards to cross to the Vein A; and at B we want but Five Yards; those Two Veins divide at the Mountain E; and the great Vein runs by F.

G The East Level Vein is very rich, as you find it described at D: We raise and wash Ore there, and make it Merchandizable at 3 s. 7 d. per Tun.

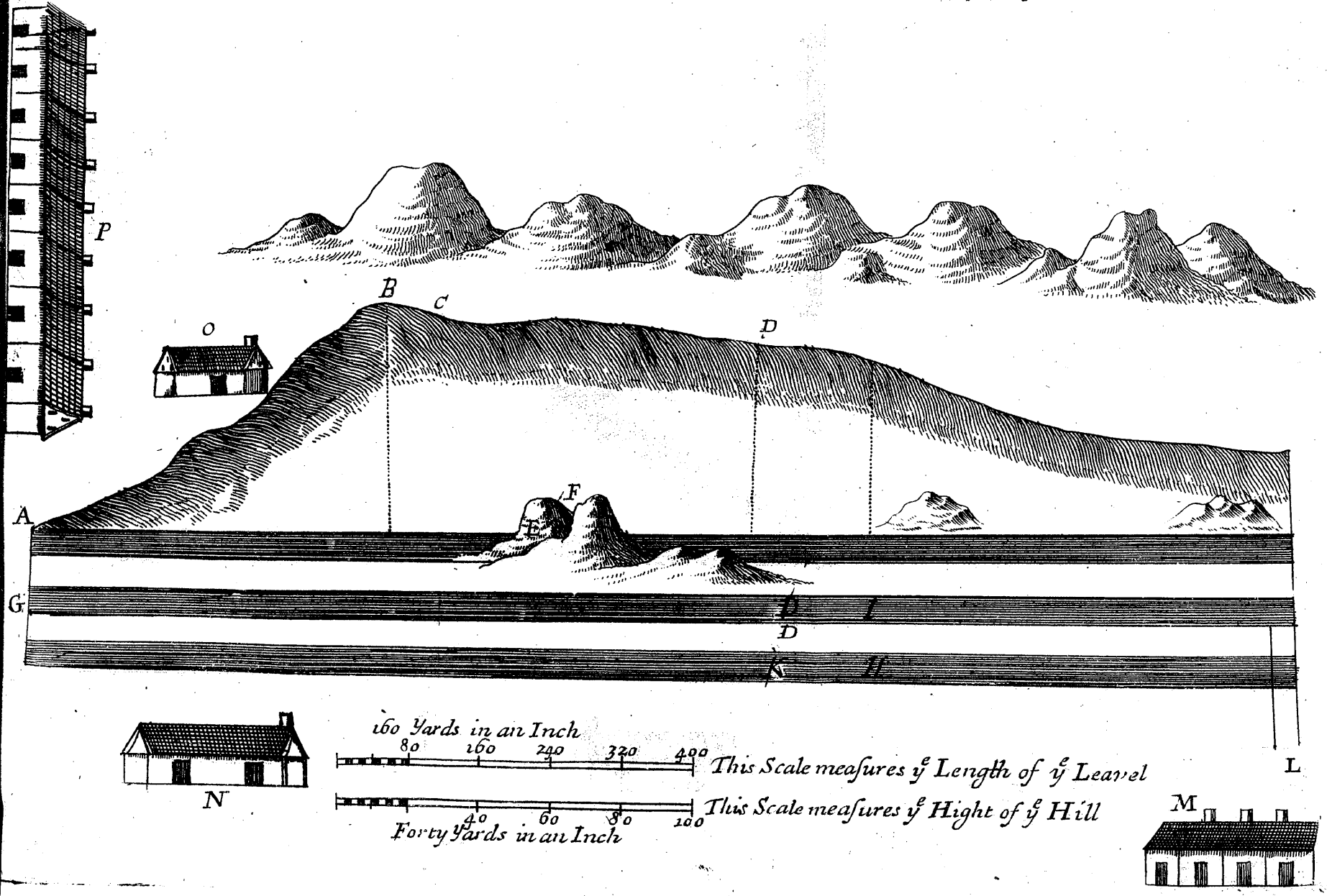
H Is the Bog-Work, where we have Ore a Yard wide, and a Drift from I will free it from Water. K The New Work is much wider, but the same Vein.

We have Three more Veins; but I have described none but where we have wrought, having much more in this Liberty, that will hereafter require a farther Description; this Boundary being above Thirty Seven Miles Compass: In which Liberty we have those Mountains included, on which the Welsh Prophecy is made, viz. In Eskir-hir a Brin Melin--- Y Mae Cyfoeth trî Brenin. Thus English'd; In Eskirhir and Brin Melin --- Lies the Wealth of Three Kings.

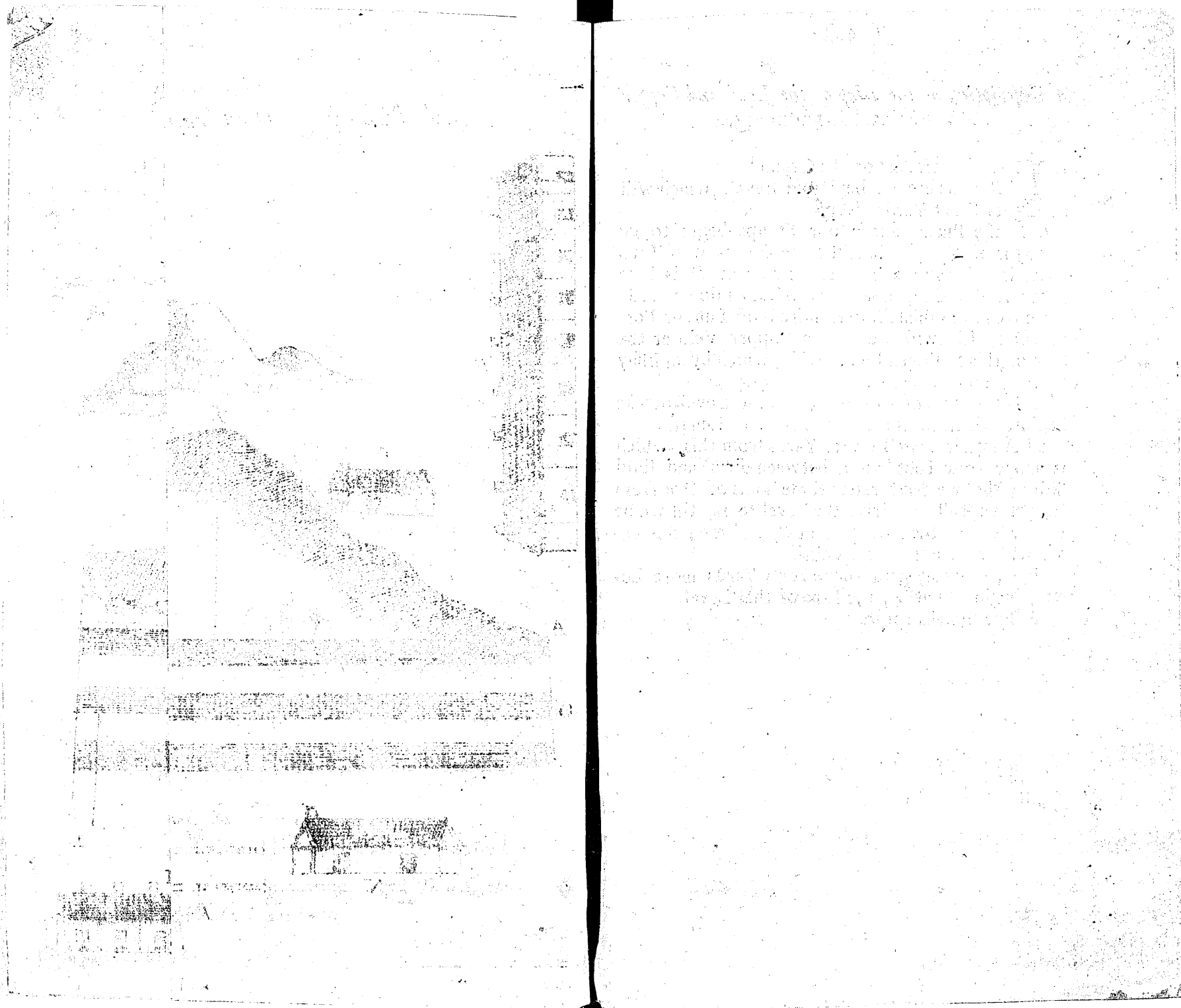
We shall set the other Part of this Liberty to work after the Mines that are here inserted in the following Maps are in full Management.

L Is the East Level; M Houses built for the Miners; N Two Store-houses; O the Smiths Forge; and P is the New Town, called, Welsh Potozi.

A Mapp of the Great Lead & Silver Mines of Bwlch-yr-eskir-hir



0388



A Description of the Map of the Lead and Copper Mines at Bwlch-kaninogg.

IS the lowest Part of the Ground.
B Is where we begin our Level, which will be Eighty Eight Yards deep.

C Is the Place where our Stoups begin to be wrought in Ore, which in some Places was Two Foot, in others One Yard; but now at *D* is Five Foot wide in Ore, and seems to widen downward: Here we have raised some Hundreds of Tuns of Potters Ore: Likewise we have a Copper Vein at the Side of this Eighteen Inches wide, which by an Essay thereof, holds One in Five in Fine Copper.

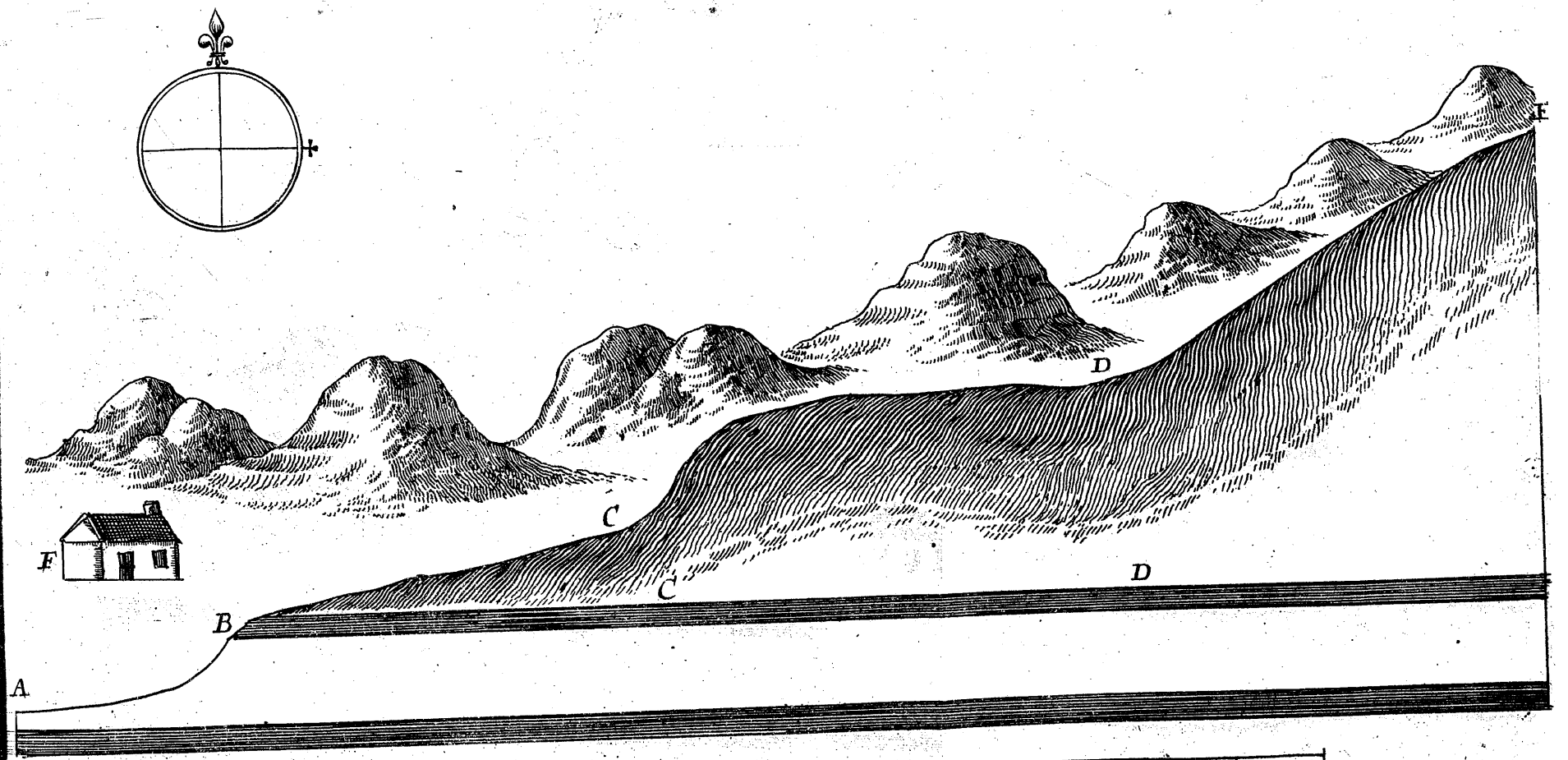
E Is the Top of the Hill where the Level-Strake begins, which continues near a Mile in Length.

A Another Vein Twenty Yards from this, which is above Four Foot wide, between firm and solid Sides; tho' we have raised some Tuns of Ore from it, yet we shall not drive the Level to it, till we be on the Rise of the Mountain at *C*, and then this Level will serve both those Veins.

Note, We may gain above Forty Yards more Level, beginning at *A*, the Line of that Level.

F The Smiths Forge.

A Mapp of y^e New Mines of Lead & Copp: ore at Bwlch Kaninog



A Scale of Yards 40 in an Inch

[The text in this section is extremely faint and illegible. It appears to be a multi-paragraph document, possibly a report or a letter, but the specific content cannot be discerned.]

A Description of the Lead and Silver Mines of Cwmsunblock.

A THE Beginning of the upper Level.

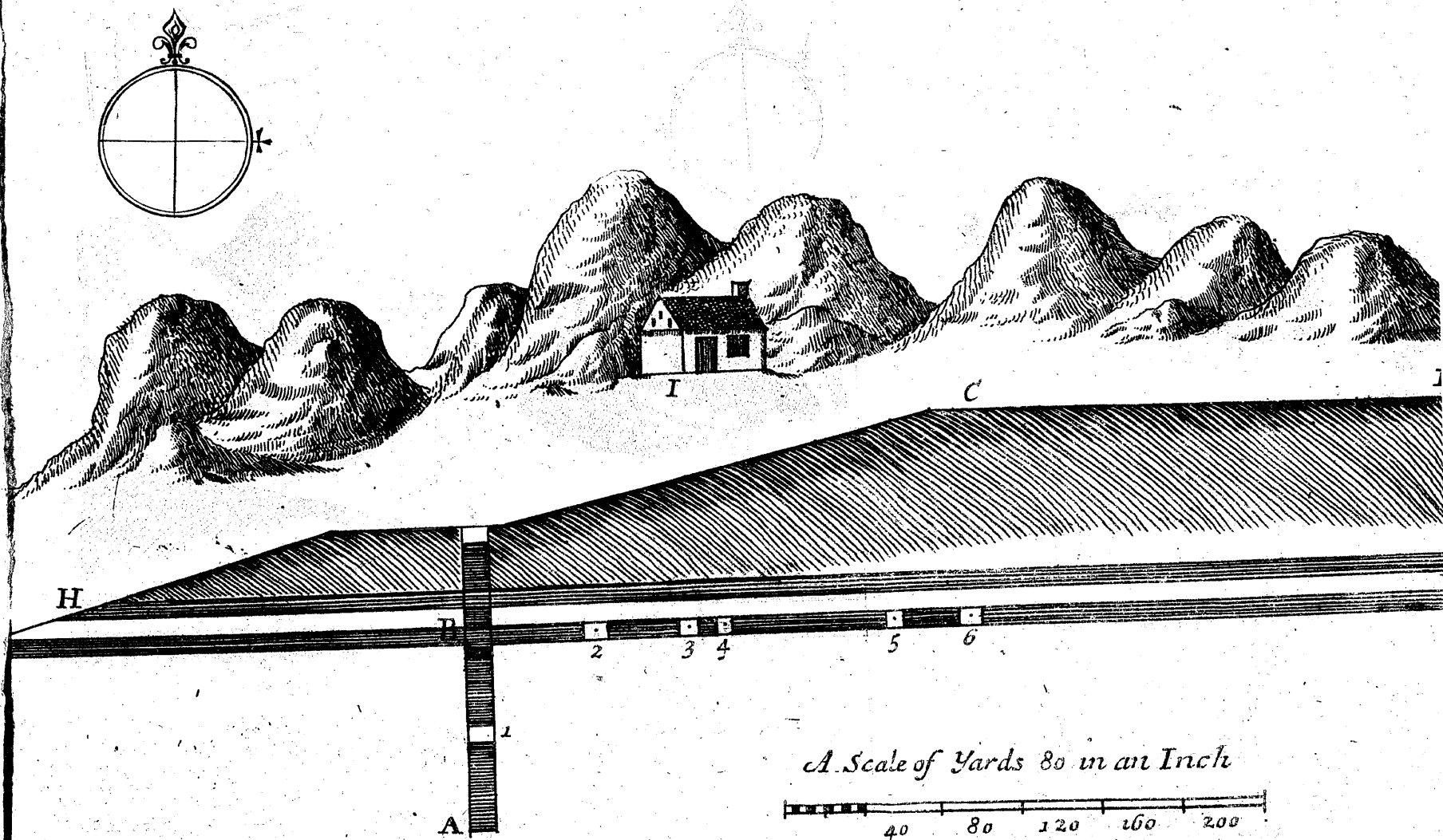
B The Place where that Level cuts into the Vein *G*. *Note*, The lower Line at *G* is the Line of Level. We have driven this Level to the Figure 5, where we are sinking a Shaft; and we raise Ore at the 4th Shaft from a Rib Two Foot wide; I doubt not when we come to our firm Strake of Ground at *C*, being Thirty Three Yards yet to drive, (which is all a continued Bog to *D*, and that Strake holds above One Mile in Length) but that we shall find our Veins as rich in Ore, as we found the Bogs at *Eskir-bir* and *Caninogg*. *Note*, This Level is Sixty Four Yards deep.

But the Level from *F* to *G* will come up in Ore under all those Soals or Bottoms, Fifty Two Yards deep, which makes the whole Level at *C* to be 116 Yards deep.

H Is the North Vein which runs about Five Yards distant from the Vein *G*; but does not run so exactly parallel, but that sometimes they meet in One for Twenty Yards, and then will part again: Where they meet, they are very rich, being each above a Yard wide. *I* is the Smiths Forge. *Note*, That a Tun of Metall of this Ore yields Sixty Five Ounces in fine Silver.

The Ingenious Sir *Hugh Middleton* took a Lease of this Mine of the Patentees of *Royal Mines* at 400 *l.* a Year Rent; and by Extracting the Silver out of the Lead, clear'd 24000 *l.* a Year from them, as appears by his Books of Accounts; and Mr. *Bushell* being flush'd with this Success, cut a measured Mile to find this Vein, to Three and Four Yards deepness, at no small Charge: And being Sir *Hugh* by an Engine had wrought it several Yards under Water, the Patentees endeavour'd to bring up an Addit, to go under this Work, at the Expence of 11000 *l.* as Sir *Edmond Wallcop*, and others of the Patentees, then of that Committee, can inform you, but they struck much short of reaching his Bottoms: And tho' that Vein hath been attempted by many, yet it never was recover'd till now, since Sir *Hugh Middleton's* Death.

A Mapp of the Lead & Silver Mines of Cwmsunblock



The first part of the report deals with the general situation of the country and the progress of the work. It is followed by a detailed account of the various expeditions and the results obtained. The report concludes with a summary of the findings and a list of references.

The first expedition was carried out in the month of January. It was led by the author and consisted of a party of five men. The route followed was from the coast to the interior, passing through the mountains. The results of this expedition were very satisfactory, as it enabled us to obtain a large amount of material for the study of the flora and fauna of the region.

The second expedition was carried out in the month of February. It was also led by the author and consisted of a party of six men. The route followed was from the coast to the interior, passing through the mountains. The results of this expedition were also very satisfactory, as it enabled us to obtain a large amount of material for the study of the flora and fauna of the region.

The third expedition was carried out in the month of March. It was led by the author and consisted of a party of seven men. The route followed was from the coast to the interior, passing through the mountains. The results of this expedition were also very satisfactory, as it enabled us to obtain a large amount of material for the study of the flora and fauna of the region.

The fourth expedition was carried out in the month of April. It was led by the author and consisted of a party of eight men. The route followed was from the coast to the interior, passing through the mountains. The results of this expedition were also very satisfactory, as it enabled us to obtain a large amount of material for the study of the flora and fauna of the region.

The fifth expedition was carried out in the month of May. It was led by the author and consisted of a party of nine men. The route followed was from the coast to the interior, passing through the mountains. The results of this expedition were also very satisfactory, as it enabled us to obtain a large amount of material for the study of the flora and fauna of the region.

The sixth expedition was carried out in the month of June. It was led by the author and consisted of a party of ten men. The route followed was from the coast to the interior, passing through the mountains. The results of this expedition were also very satisfactory, as it enabled us to obtain a large amount of material for the study of the flora and fauna of the region.

The seventh expedition was carried out in the month of July. It was led by the author and consisted of a party of eleven men. The route followed was from the coast to the interior, passing through the mountains. The results of this expedition were also very satisfactory, as it enabled us to obtain a large amount of material for the study of the flora and fauna of the region.

The eighth expedition was carried out in the month of August. It was led by the author and consisted of a party of twelve men. The route followed was from the coast to the interior, passing through the mountains. The results of this expedition were also very satisfactory, as it enabled us to obtain a large amount of material for the study of the flora and fauna of the region.

The ninth expedition was carried out in the month of September. It was led by the author and consisted of a party of thirteen men. The route followed was from the coast to the interior, passing through the mountains. The results of this expedition were also very satisfactory, as it enabled us to obtain a large amount of material for the study of the flora and fauna of the region.

The tenth expedition was carried out in the month of October. It was led by the author and consisted of a party of fourteen men. The route followed was from the coast to the interior, passing through the mountains. The results of this expedition were also very satisfactory, as it enabled us to obtain a large amount of material for the study of the flora and fauna of the region.

The eleventh expedition was carried out in the month of November. It was led by the author and consisted of a party of fifteen men. The route followed was from the coast to the interior, passing through the mountains. The results of this expedition were also very satisfactory, as it enabled us to obtain a large amount of material for the study of the flora and fauna of the region.

The twelfth expedition was carried out in the month of December. It was led by the author and consisted of a party of sixteen men. The route followed was from the coast to the interior, passing through the mountains. The results of this expedition were also very satisfactory, as it enabled us to obtain a large amount of material for the study of the flora and fauna of the region.

A Description of the Map of the Great Lead and Silver Mines of Goginian.

THE Line of Level, or the Beginning of the Addit.

B The *Old Man's Fore-field*, which is a main Twitch from the Top to the Old Addit; here they have loft above Sixty Yards of Level.

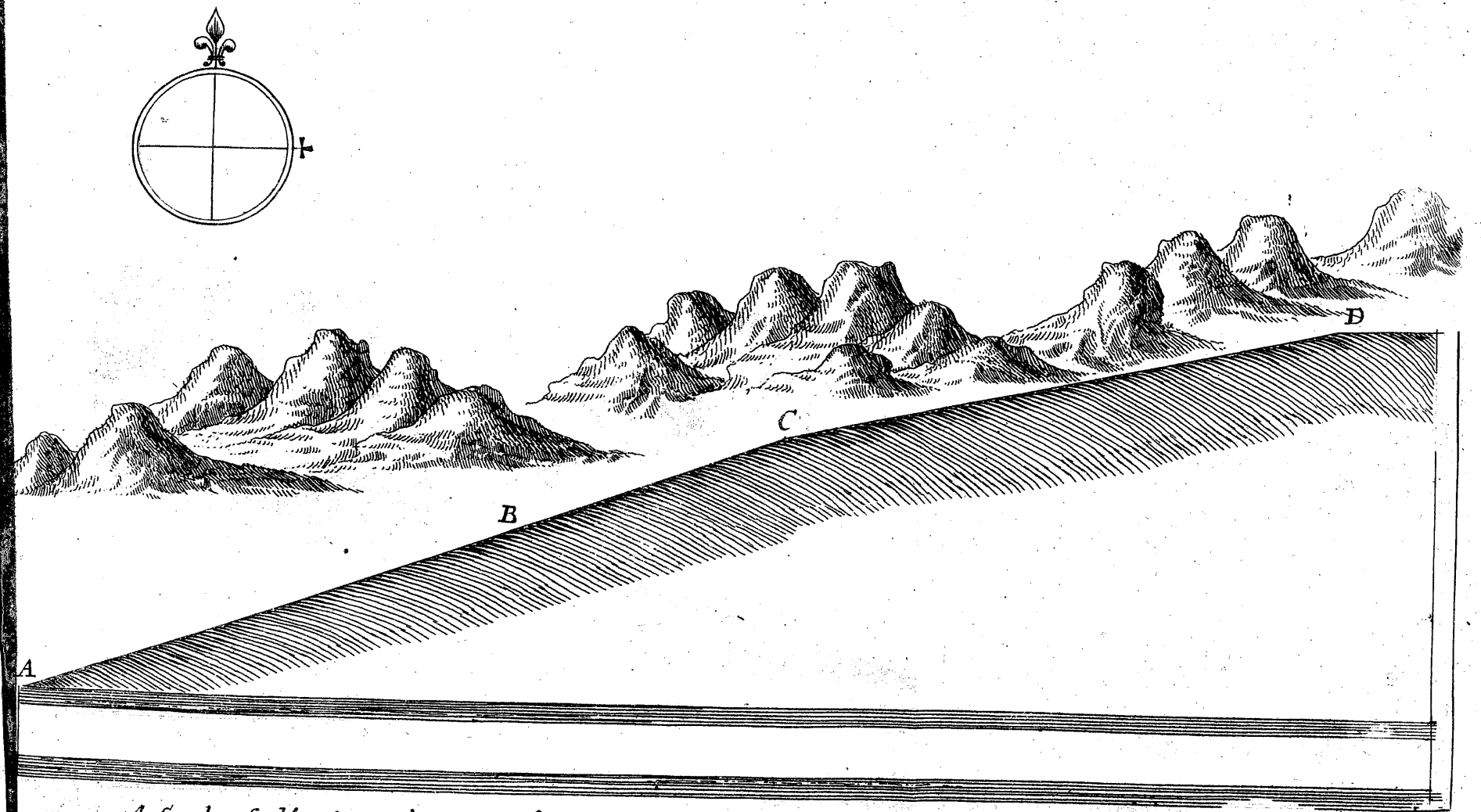
At *D* this Level will be a Hundred Yards deep, and we shall be Sixty Yards under the Old Work. Mr. *Bushell* kept a Mint at work at the Silver Mills in *Cardiganshire*, from the Bullion he had from this Mine; and is said to cloath King *Charles* the First's whole Army from part of his Profit in this Work.

Here is a soft Clay Vein, and a hard Vein goes in Company of each other, and sometimes they meet and cros; and when the Clay Vein was on the South Side, both were richer than when it was on the North.

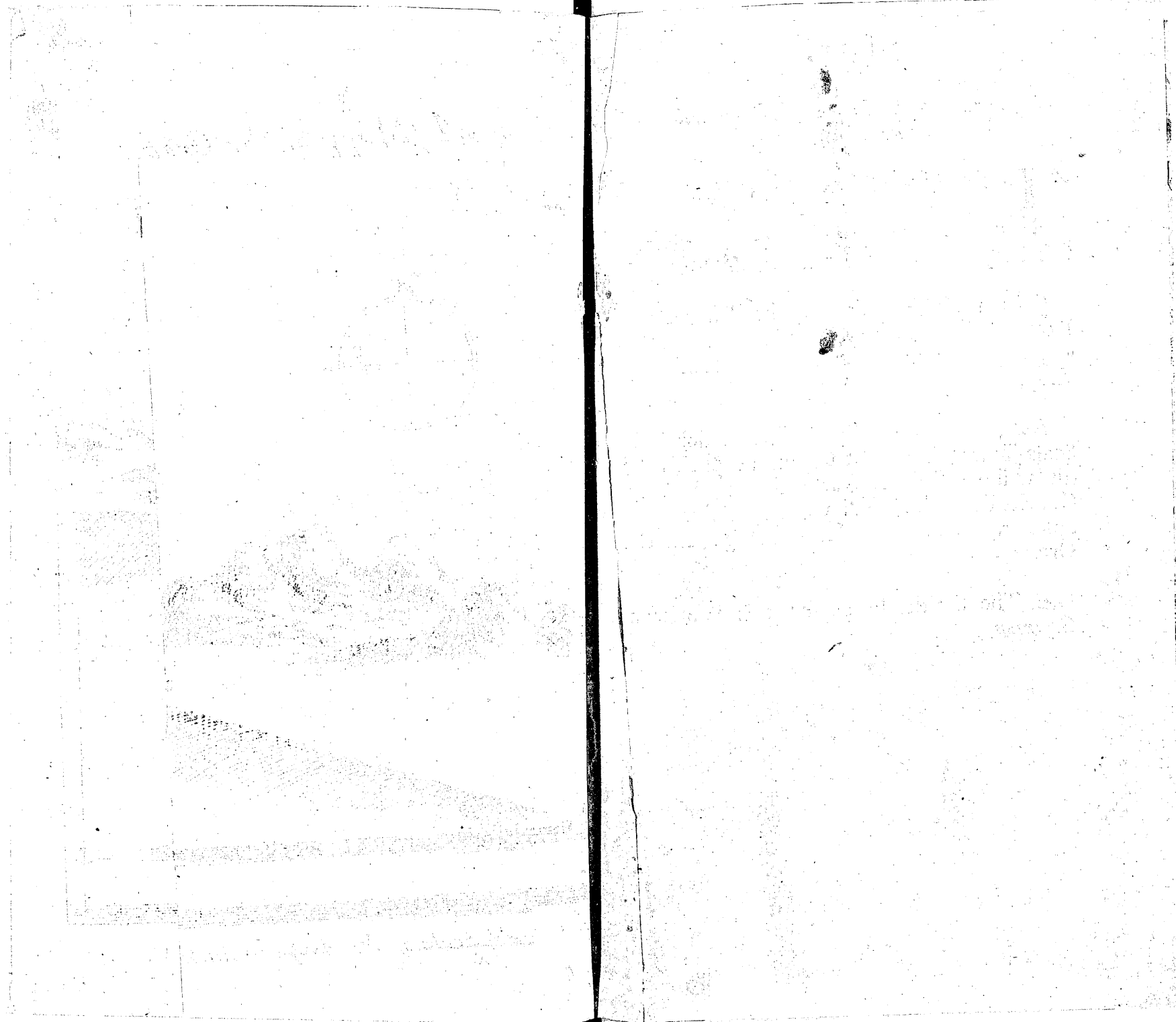
I have dressed up an old Level which was never driven into that Work, which will go some few Yards under part of it; and it likewise serves for a Level to another Vein, call'd *Brinpicka*, which is hereafter described by it self.

Note, These Veins holds Forty Four Ounces of fine Silver per Tun in every Tun of Mettal made of that Ore.

A Mapp of the Great Lead & Silver Mines of Goginian



0394



A Description of the Map of the Lead and Silver Mines of Brinpica.

A IS the Line of Level or Addit.

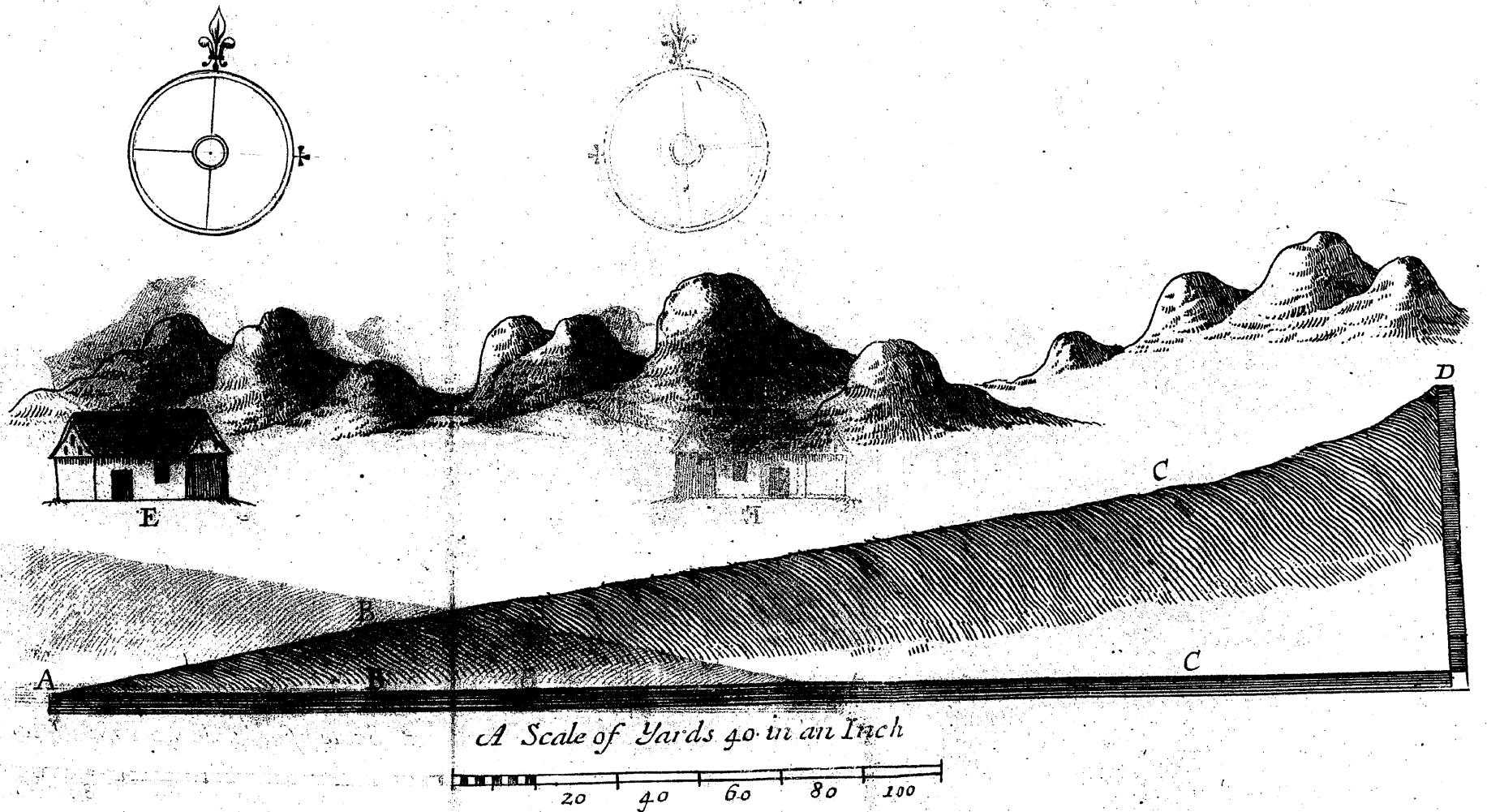
B Is where we now are driving, being a soft Clay Vein, mixed with small Ore.

C Is a Shaft sunk by the Patentees of Royal Mines, in which is a firm Rib of Ore Eighteen Inches wide at Eighteen Yards deep.

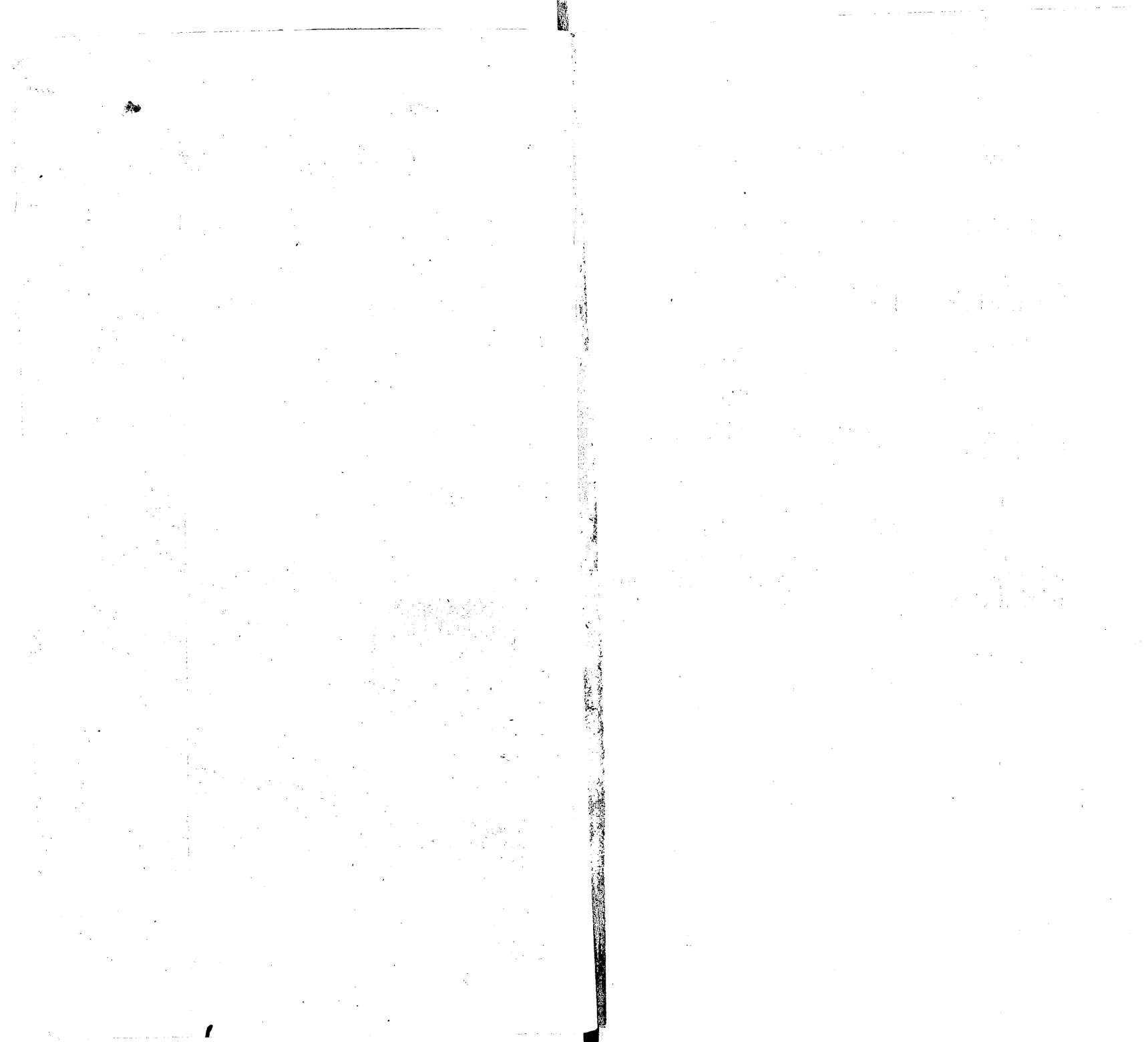
Note, That we shall come under their Soals Thirty Yards at **C**, and at **D** this Addit will be Seventy Yards deep: And this Ore holds Forty Four Ounces in fine Silver upon every Tun of Mettal made from that Ore.

E The Smiths Forge for this Work and *Goginian.*

A Mapp of the Lead & Silver Mines of Brinpicka.



0396



A Map of the Lead and Silver Mines of Cwmarvin.

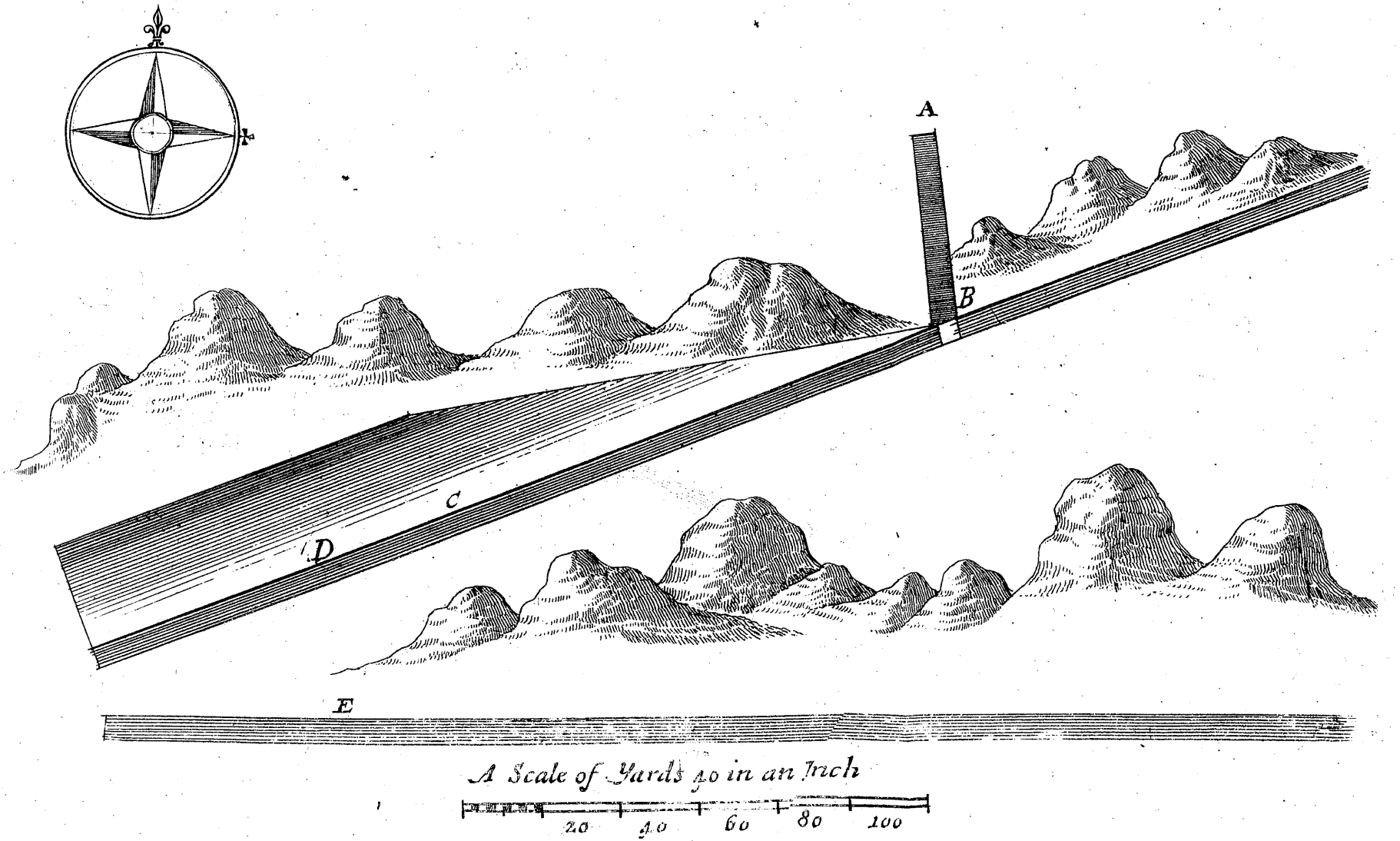
THE Beginning of the Addit.

B The Place where it cuts into the Vein at Eighteen Yards deep.

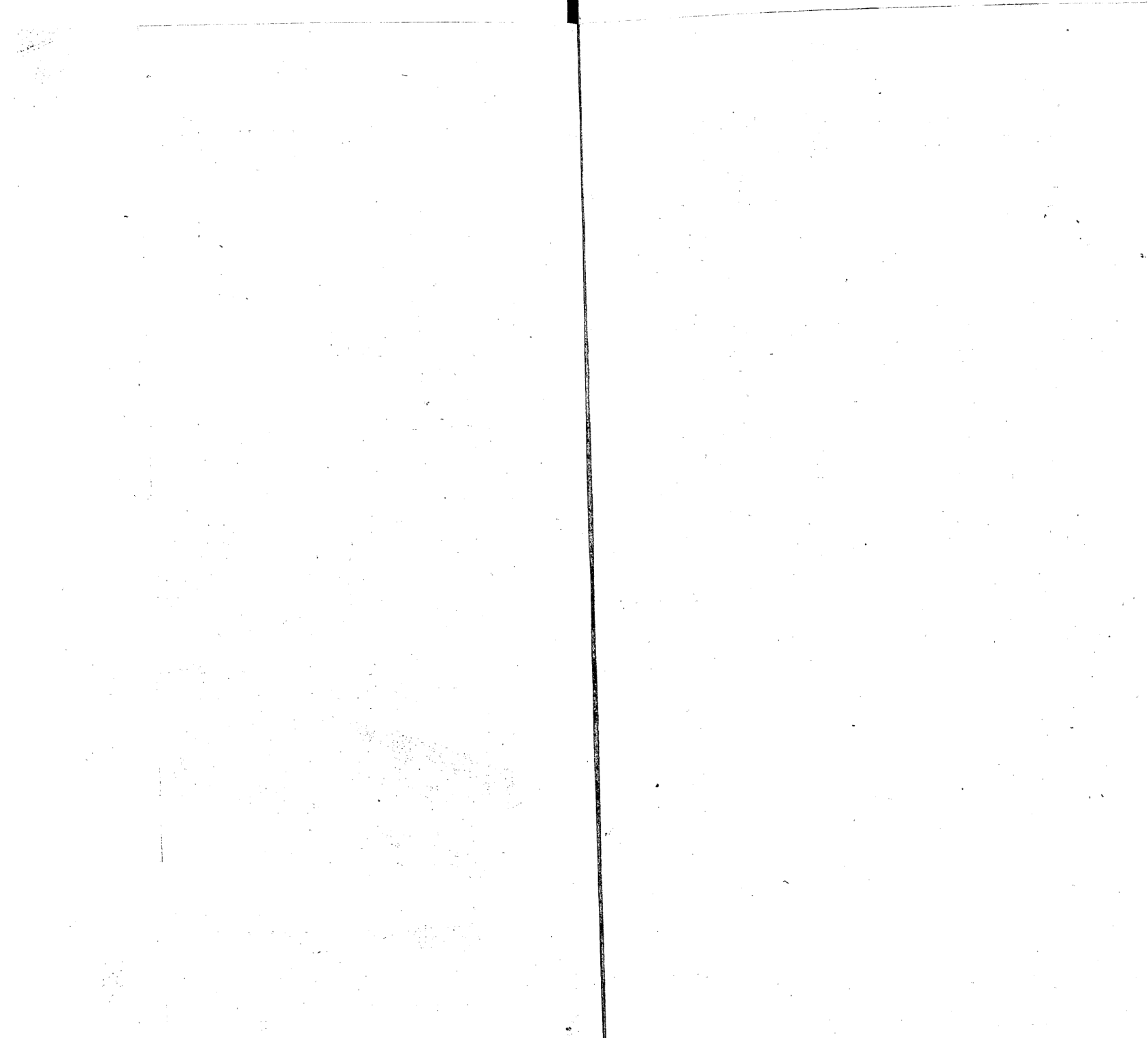
C The Place where we are driving to the West at Fifty Four Yards deep, where our Vein is a Yard wide; but the clean Rib of Ore is but about Four Inches wide; the rest is mixed with Ore.

D Is the Place where we intend to cross to the Vein *E*, which is one of the *Goginian* Veins, and holds Forty Four Ounces of fine Silver *per Tun*, in every Tun of Mettal made of that Ore.

A Mapp of y^e Lead & Silver Mines of Cumarvin.



0398



A Description of a Map of the Lead and Silver Mines in Pencraig-ddy.

THE Line of Level, or the Beginning of that Addit.

B The Place we now are driving; and Twenty Yards further we shall come to a fresh Forehead, or Forefield, four Foot wide: It is now Ten Inches in Ore.

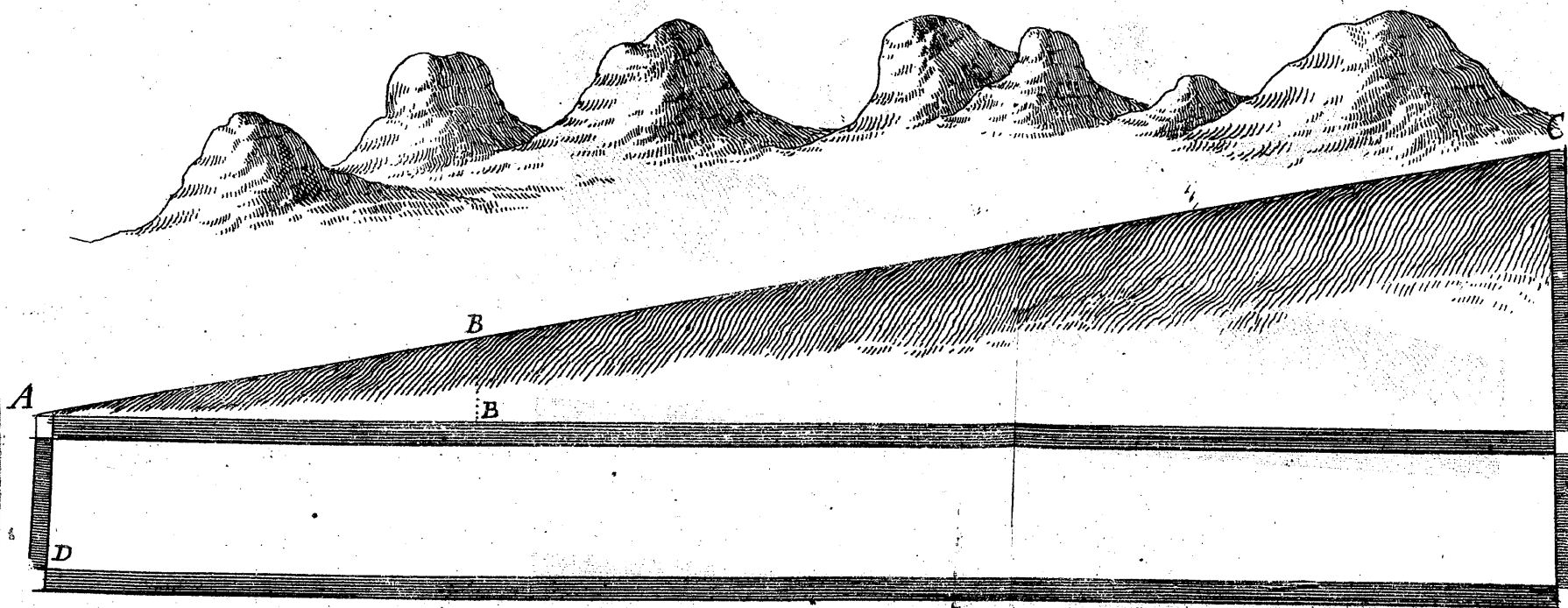
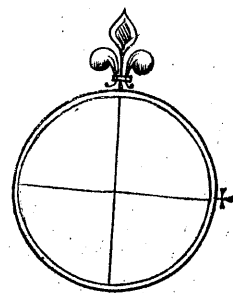
C The Place where the Strake of Ground begins, where we shall be Sixty Four Yards deep, and within Thirty Yards of another Vein.

D The North Vein, which is all Measures from a Yard to Five Foot wide, in which we sunk Fourteen Yards deep, and it has a small Level to that Deepness; but that reach'd but Two Yards into the Crop of the Vein, which is mixed with Ore and Vein-Stone all the Breadth, and with clean Ribs of Ore in several Places Nine Inches wide.

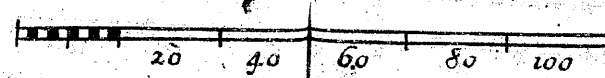
Note, The Level from *A* will be Fifty Yards deeper, and with crossing Thirty Yards, will likewise be a Level to the Vein *D*; and these Two Veins have a Strake through a Morass from *C* for above Six Hundred Yards in Length; and these Two Veins, no doubt, will raise Ore very plentifully in that Ground.

Note, That One Tun of Mettal made from this Ore yields Forty Four Ounces of fine Silver in each Tun.

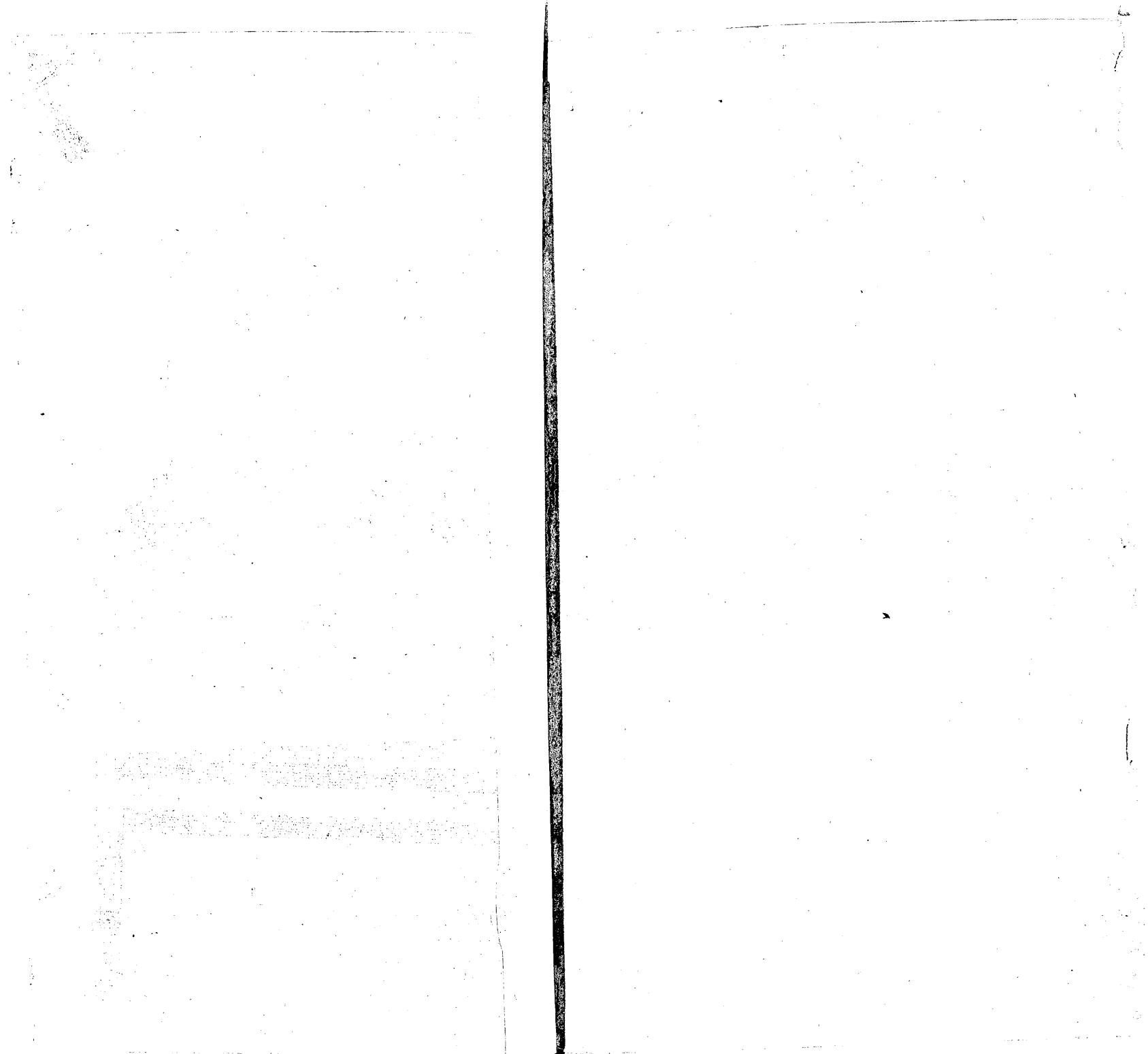
A Mapp of the Lead & Silver Mines of Pencraigddy



A Scale of Yards 40 in an Inch



0400



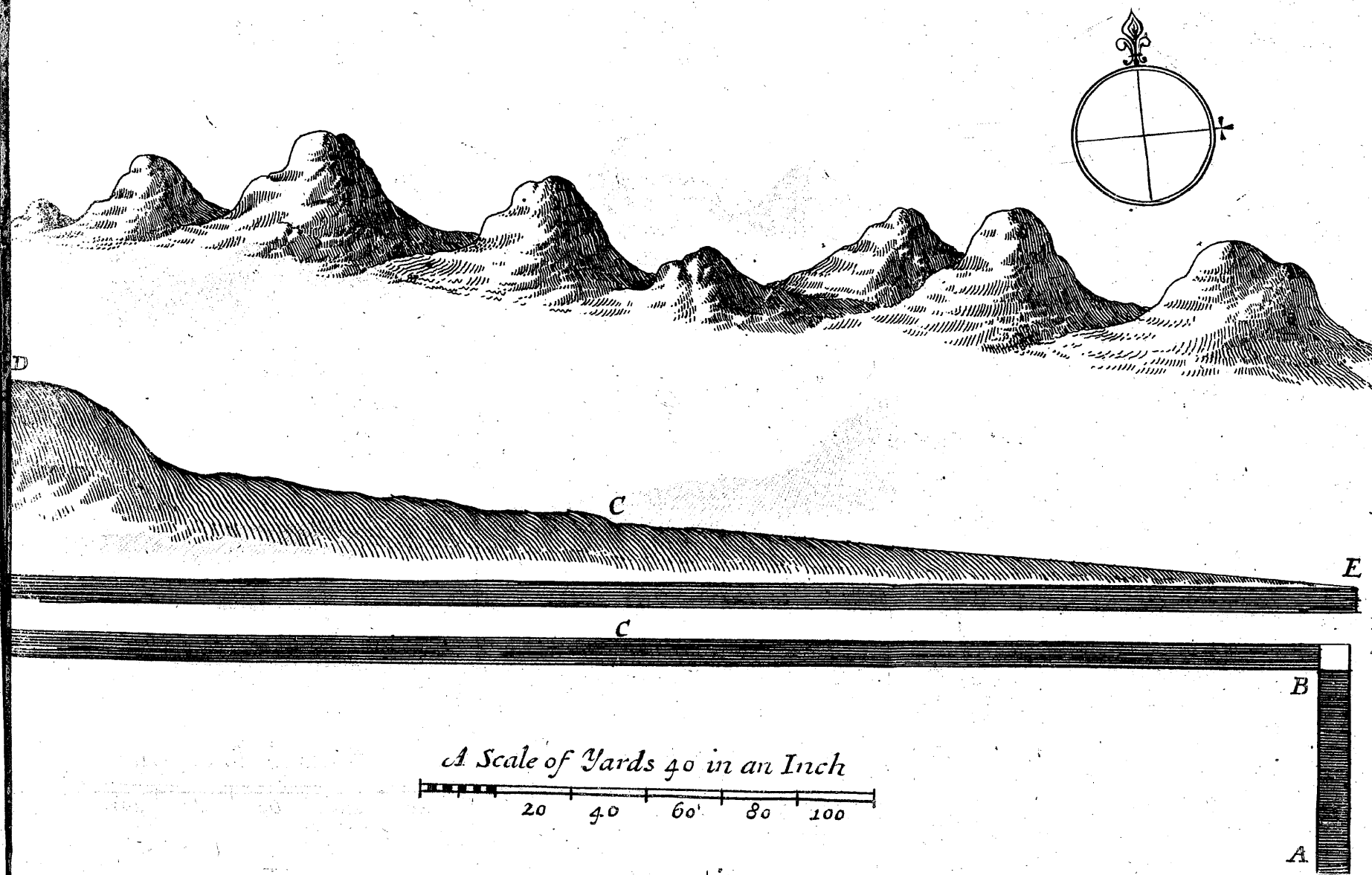
A Description of the Map of the Lead Mines of Ystimtean.

A THE Beginning of the Addit.
B Where it cuts into the Vein.
E The North Vein.

C Where we now are driving in the Sun Vein; and have already open'd Thirty Three Yards in Ore, all measures from a Foot to Two Foot wide; but the last Eight Yards at **C** is above a Yard wide in good Ore, and grows wider as we drive Westward, and is there Eighteen Yards deep, and a fine feeding Ground to **D**; and there we have a Level of Fifty Yards deep, and a good feeding Ground for above Eight Hundred Yards more, being all Bog, and Watery Grounds, where Five Veins run, and never fail of being rich in Ore; which is all guarded or inclosed in a Blue Raggfill.

Note, That **E** the Line of Level to this Map.

A Mapp of y^e Lead Mines of Ystimtean.



The first part of the report is a general description of the work done during the period covered by the report. It is followed by a detailed account of the work done on the various projects mentioned in the title. The work on the first project was completed in the first half of the period, and the results are given in the following table. The work on the second project was completed in the second half of the period, and the results are given in the following table. The work on the third project was completed in the third half of the period, and the results are given in the following table. The work on the fourth project was completed in the fourth half of the period, and the results are given in the following table. The work on the fifth project was completed in the fifth half of the period, and the results are given in the following table. The work on the sixth project was completed in the sixth half of the period, and the results are given in the following table. The work on the seventh project was completed in the seventh half of the period, and the results are given in the following table. The work on the eighth project was completed in the eighth half of the period, and the results are given in the following table. The work on the ninth project was completed in the ninth half of the period, and the results are given in the following table. The work on the tenth project was completed in the tenth half of the period, and the results are given in the following table.

The Description of the Map of the great Lead Mines of Cwmustwith.

A THE Line of Level, or the Beginning of the Addit, being Sixty Eight Yards deep.

Note, This Vein runs all in Bellies of Ore of all Sizes, from Four Yards broad to Seven Yards, and from Ten Yards long to Thirty Yards; and from Four Yards high to Seven Yards; and lies in the same Manner one upon another as *B, C, D* and *E* Twitch forward; so that you have sometimes a Belly of Ore Six or Seven Yards wide, and sometimes nothing but a Leader of one Inch thick to follow for Five or Ten Yards, both in sinking and driving.

F The hard Ore Vein Five Yards wide between firm Sides all mixed for that Breadth with Ore; and clean Ribbs of Ore in it, some of Six Inches, some Twelve, some Eighteen, and some Twenty Inches wide.

G Is the Stamping-Mill to dress that Ore that is mixed with Stone.

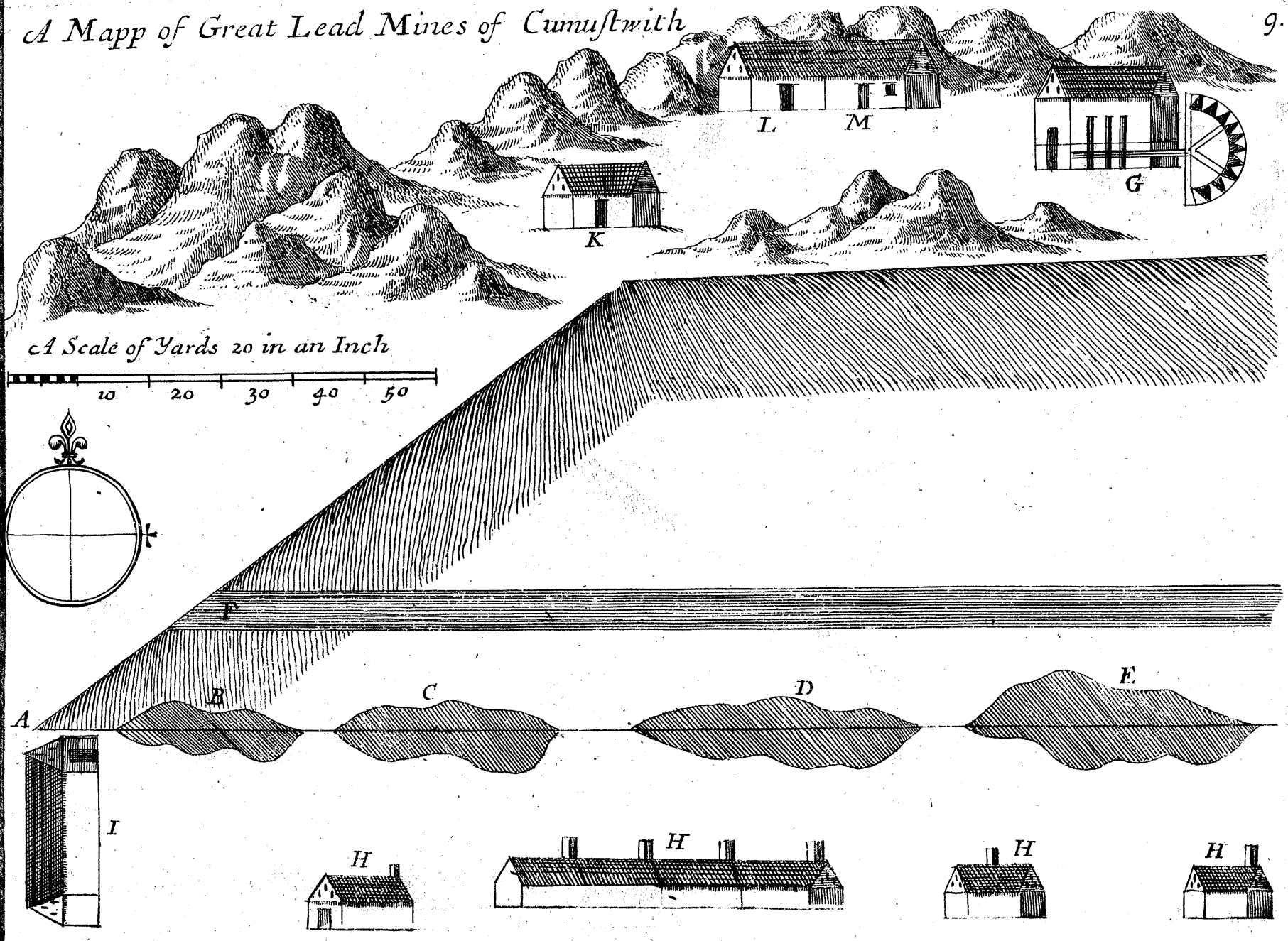
H, H, H Is the Town that we have built for our Miners.

I, K, L Is Store-houses.

M Is a Smiths Forge.

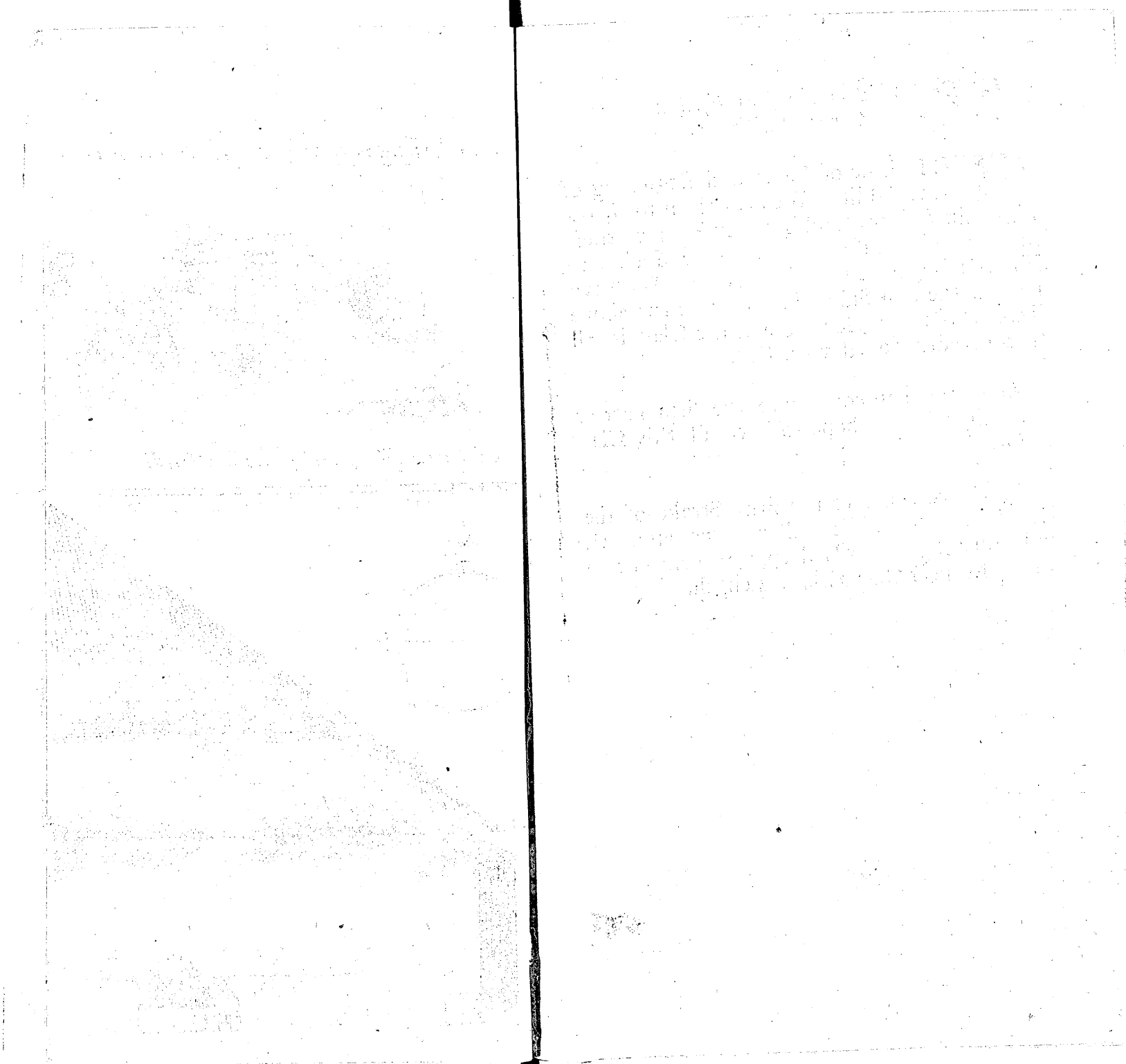
Here we have a large Liberty of above Twenty Miles Compass, which contains several more Veins; but I have not here described them, till it is thought fit to try them, excepting One called the New Work, and lies about Three Hundred Yards from this Work.

A Mapp of Great Lead Mines of Cwmustwith



A Scale of Yards 20 in an Inch

0404



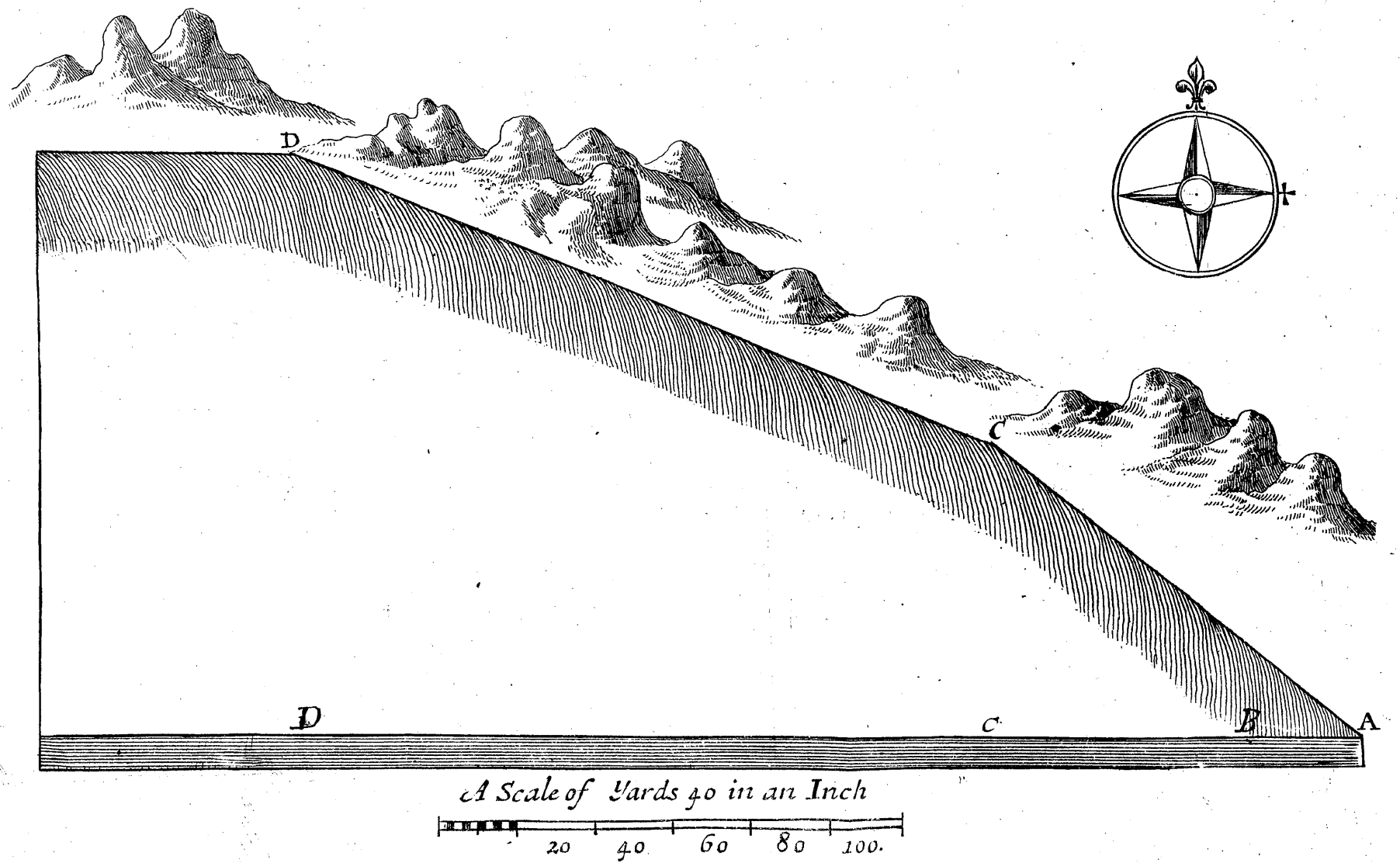
The Description of the New Lead Mines at Cwmustwith.

A THE Line of Level and Beginning of the Addit. We are driven to B, being Thirty Yards, and Twenty Four of these in Ore, all measures from Nine Inches to Fifteen: This is a wide Clay Vein. We have not yet the Sun Side, tho' we have cut above Two Yards wide for it; and the Clay is all that Breadth mixed with Ore.

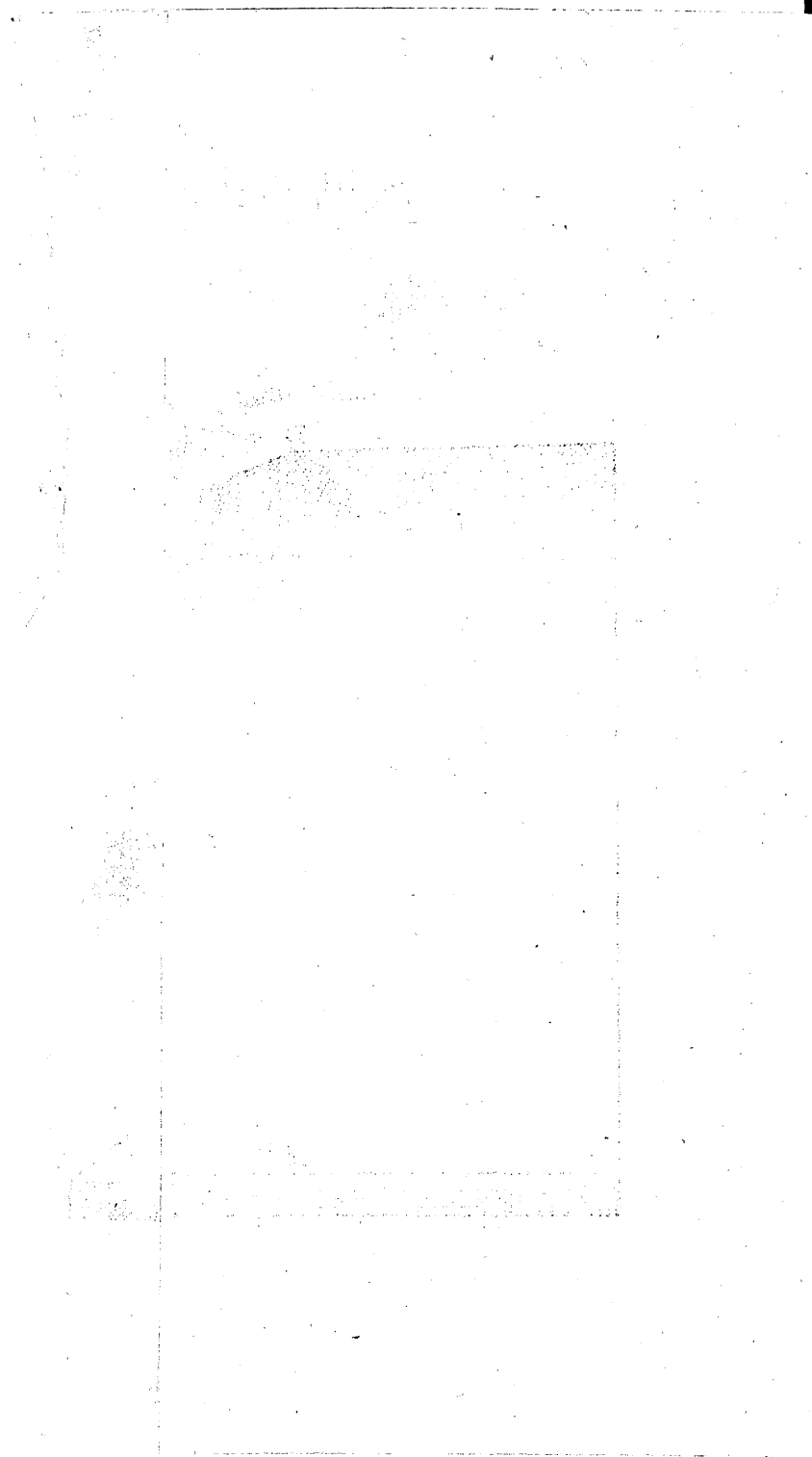
At C we shall come into the firm Part of the Hill, where I hope to have all this Clay in Ore.

At D we come to the firm Strake of the Hill, and our Addit will be One Hundred and Fifty Four Yards deep, and continues a Strake for near One Mile in Length.

A Mapp of y^e New Lead Mines at Cwmustwith.



0406



Handwritten text in the upper right section, appearing to be a list or notes, though the characters are mostly illegible due to fading.

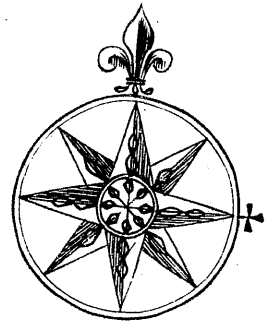
Handwritten text in the lower right section, continuing the list or notes, also largely illegible.

N. B. That in order to measure the Distance of any Two Places, either in the general Map of the Country, or in the particular Maps of the Mines, you must with a Pair of Compasses take the extended Distance of the Two Places between their Points, which Distance being laid upon the Scale of Miles for the general Map, or Yards for the particular Maps, gives you the Distance of the Places in Miles or Yards.

E X A M P L E.

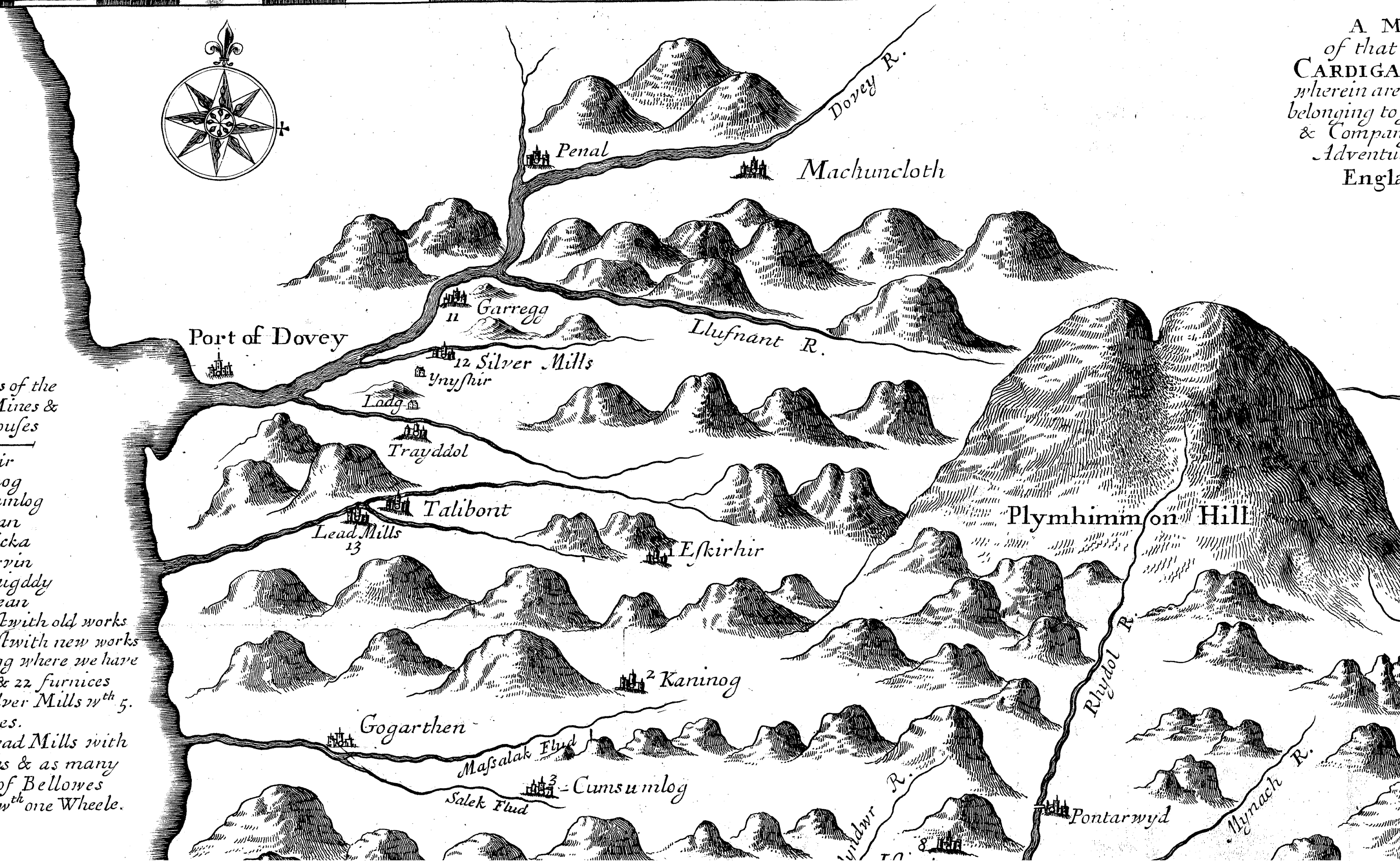
Suppose I would know the Distance from Eskirhir to the Silver Mills, in the general Map, I fix the one Point of the Compasses at Eskirhir, and extend the other Point to the Silver Mills, which Distance being laid on the Scale of Miles, reaches Three Miles and something above Half a Mile; and so of the Rest.

A Map
of that
CARDIGAN
wherein are
belonging to
& Company
Adventurers
Engl



The names of the
Severall Mines &
Worke Houses

1. Eskirhir
2. Karinog
3. Cumsunlog
4. Goginan
5. Brupicka
6. Cumarvin
7. Pencraigddy
8. Istintear
9. Cumustwith old works
10. Cumustwith new works
11. Garregg where we have
a Key & 22 furnices
12. The Silver Mills wth 5.
furnices.
13. Is y^e Lead Mills with
4 harths & as many
pare of Bellowes
drive wth one Wheele.



Port of Dovey

Penal

Machuncloth

Garregg

Llufnant R.

Silver Mills

Ynyshir

Ladg

Trayddol

Talibont

Lead Mills

13

Eskirhir

Plymhimm on Hill

Karinog

Gogarthen

Masalak Flud

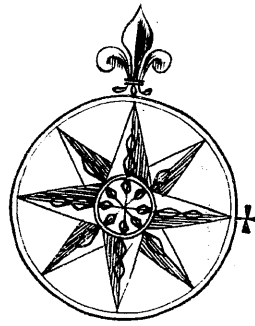
Cumsunlog

Salek Flud

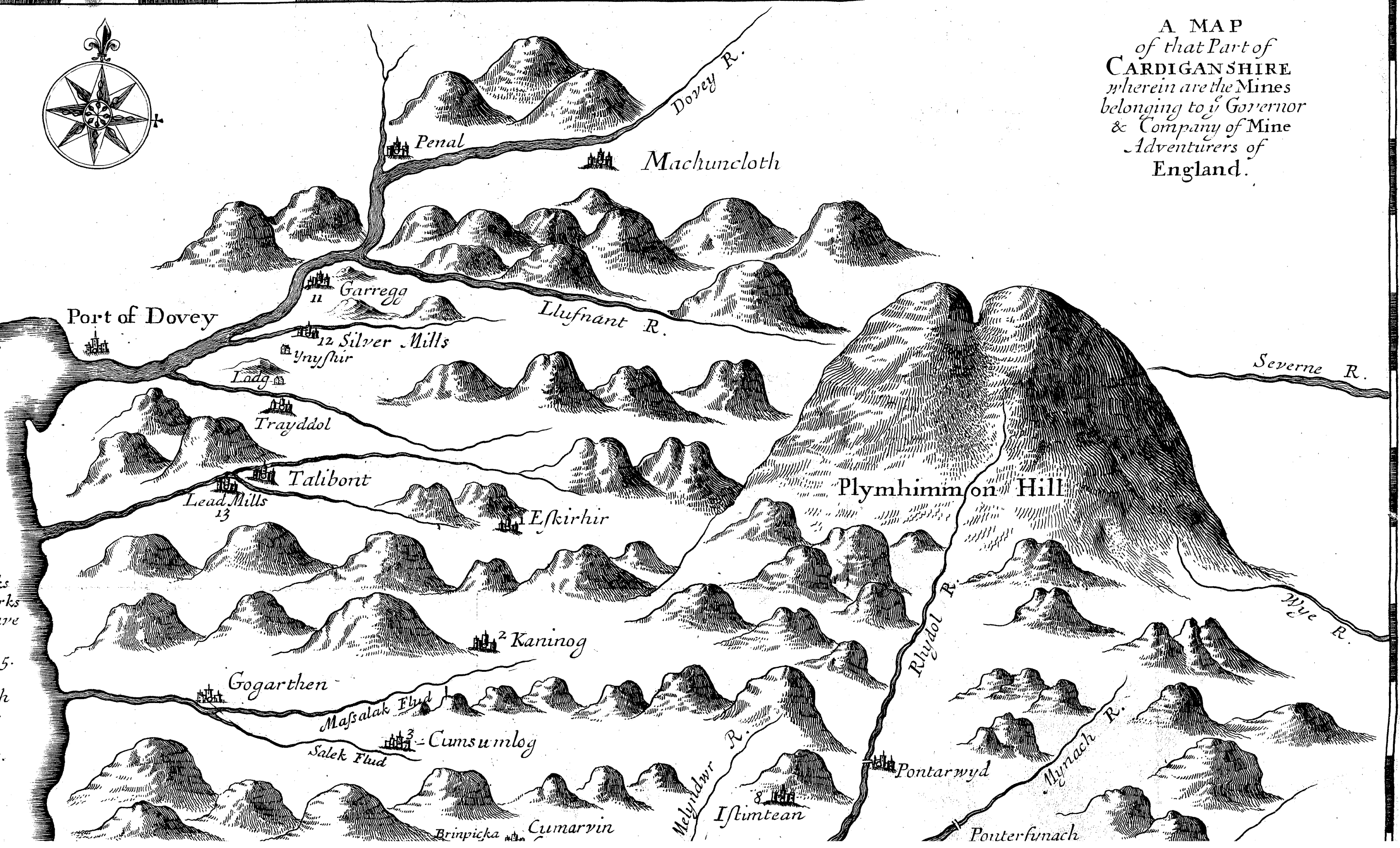
Rhydol R.

Pontarwyd

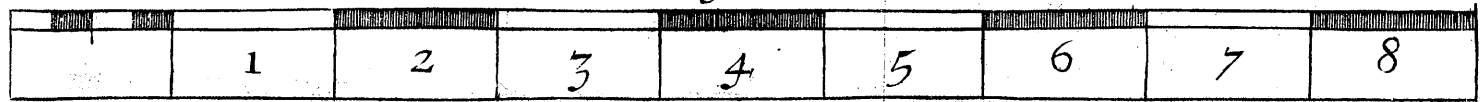
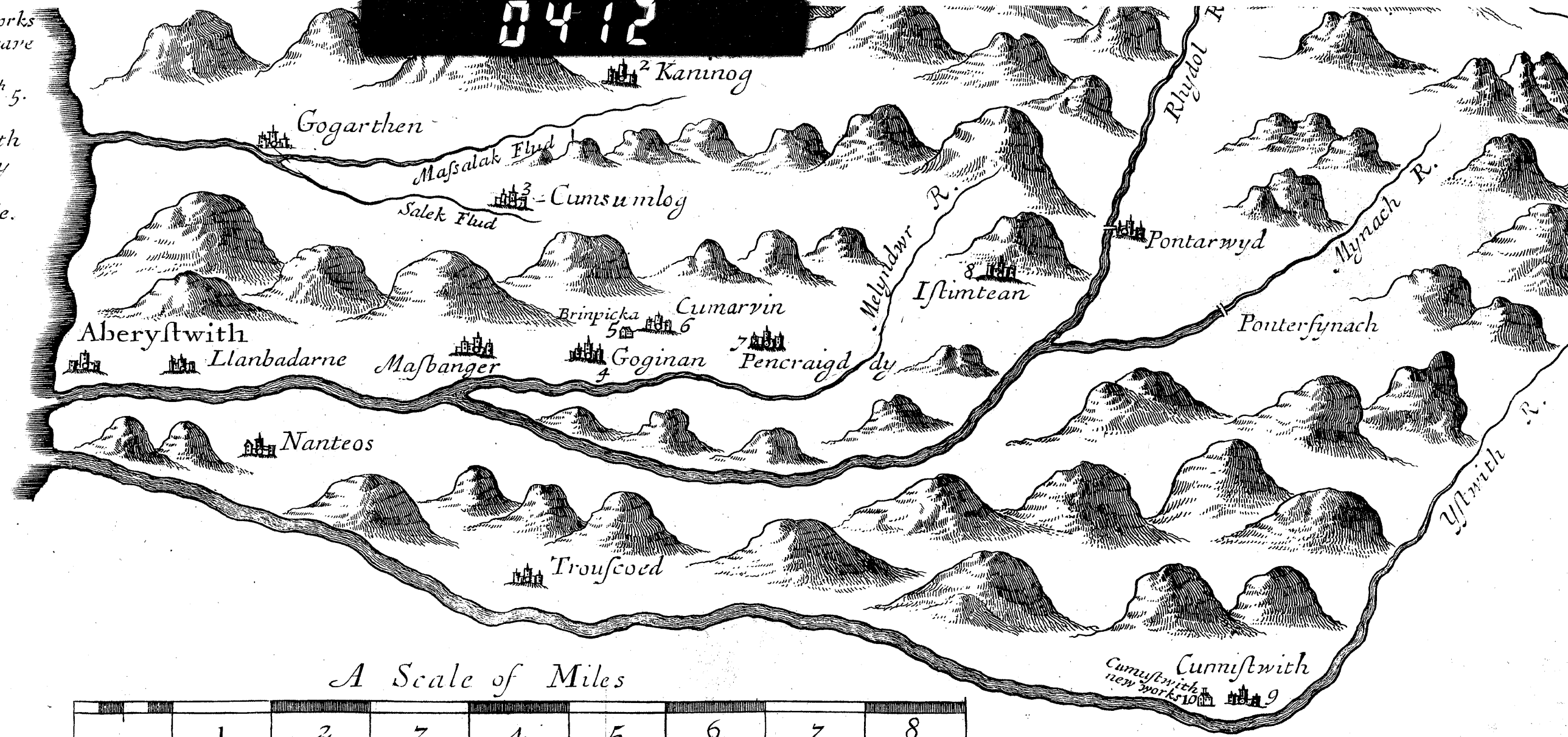
Mynach R.

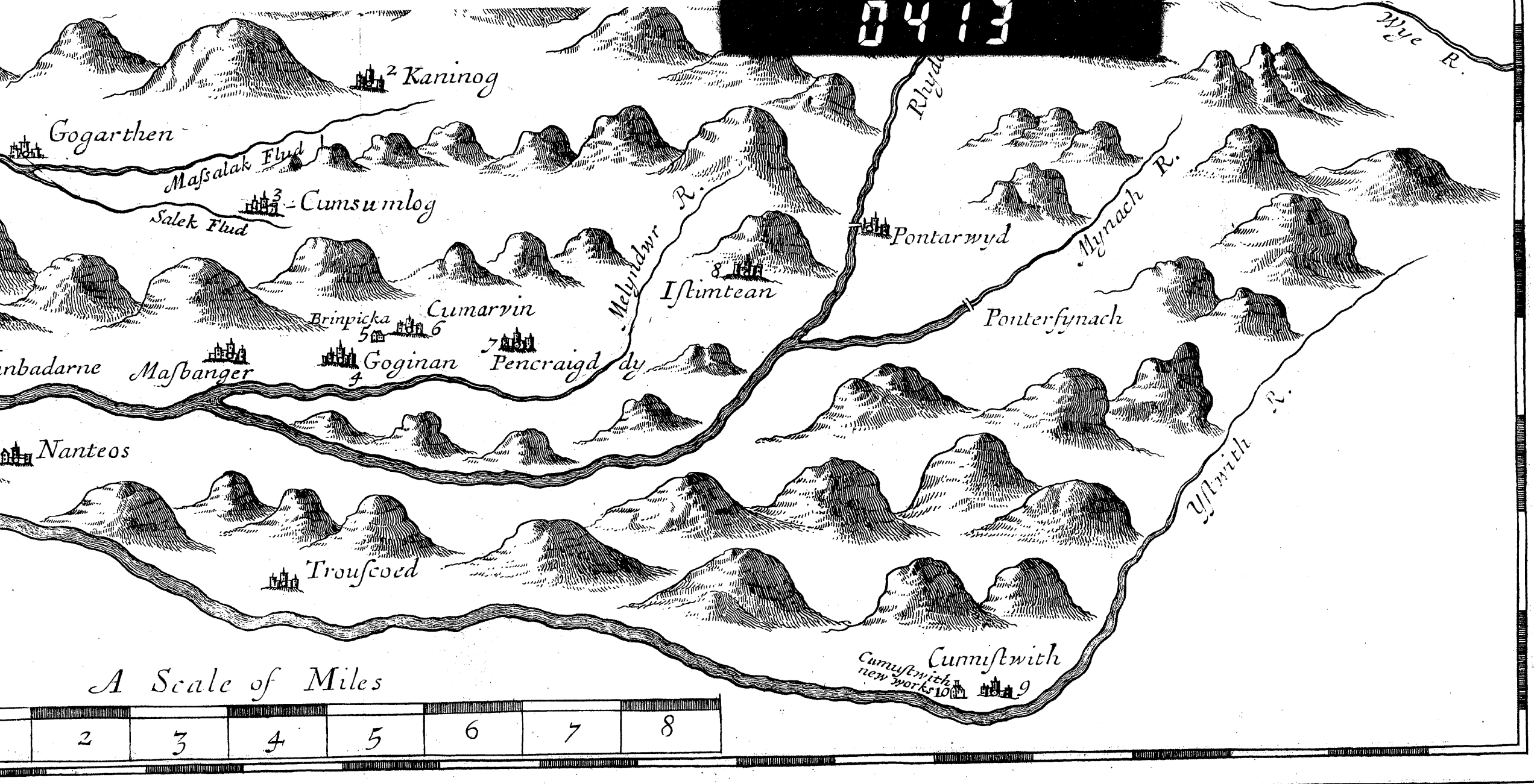


A MAP
of that Part of
CARDIGANSHIRE
wherein are the Mines
belonging to y^e Governor
& Company of Mine
Adventurers of
England.



- 10. Cunnistwith new works
- 11. Garregg where we have a Key & 22 furnices
- 12. The Silver Mills wth 5. furnices.
- 13. Is y^e Lead Mills with 4 harths & as many pare of Bellows drive wth one Wheele.





² Karinog

Gogarth

Mafsalak Flud

³ Cumsu mlog

Salek Flud

Brinpicka

Cumarvin

⁵

⁶

Goginan

⁷ Pencraigd

⁸ Istimtean

Pontarwyd

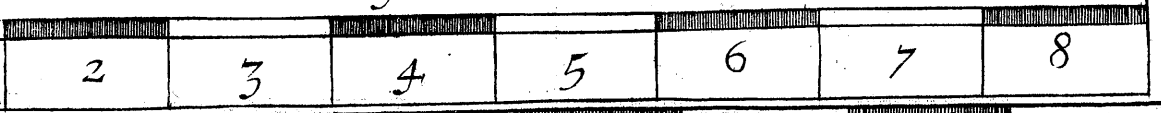
Ponterfynach

Nanteos

Troufcoed

Cumistwith
new works ¹⁰

A Scale of Miles



0414

